

PICHLER

La nostra storia

Val d'Ega

Ponte Nova

Alto Adige



Nel 1978 i fratelli Walter e Ferdinand Pichler fondarono un'azienda artigianale a Ponte Nova nella Val d'Ega. Il primo luogo di attività era la "vecchia fucina", che è stata gestita dai Pichler per generazioni. In oltre 40 anni, l'azienda si è trasformata da una piccola realtà artigianale in un'azienda internazionale attiva nel settore delle costruzioni in acciaio e delle facciate.



Oggi, oltre 250 dipendenti qualificati garantiscono in ogni momento che la qualità dei progetti e dei servizi è un obiettivo primario dell'azienda e che una chiara focalizzazione sul vantaggio del cliente è il presupposto essenziale per il successo dell'azienda. Competenza, qualità e affidabilità - tre argomenti "in acciaio" per cui architetti, clienti privati e pubblici ci affidano impegnativi compiti di costruzione.



Chi siamo

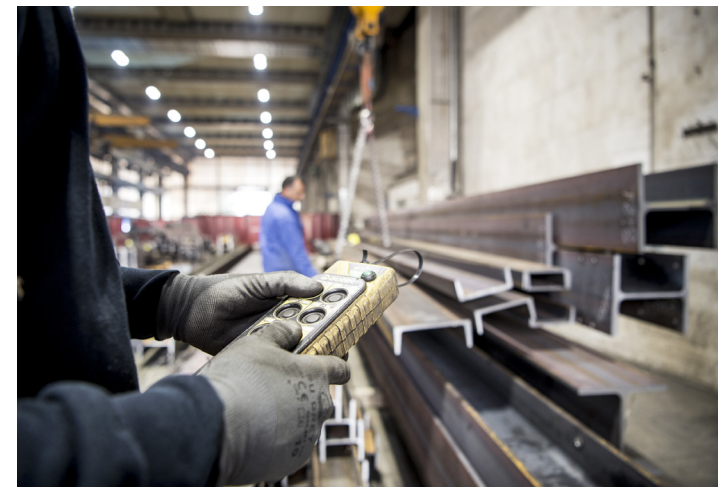
Competenza

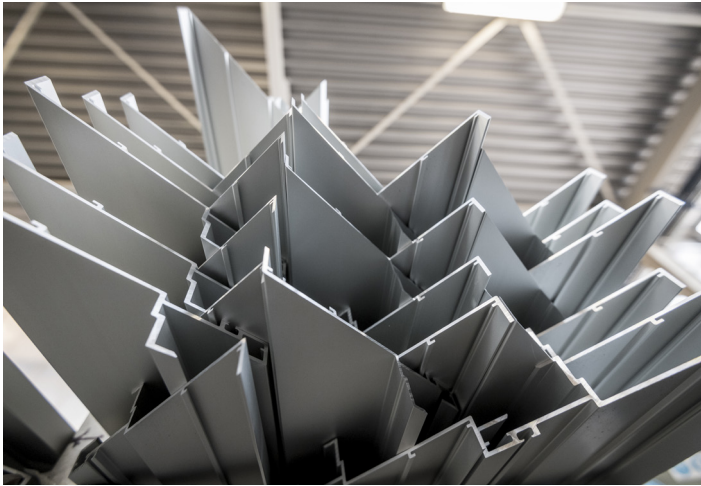
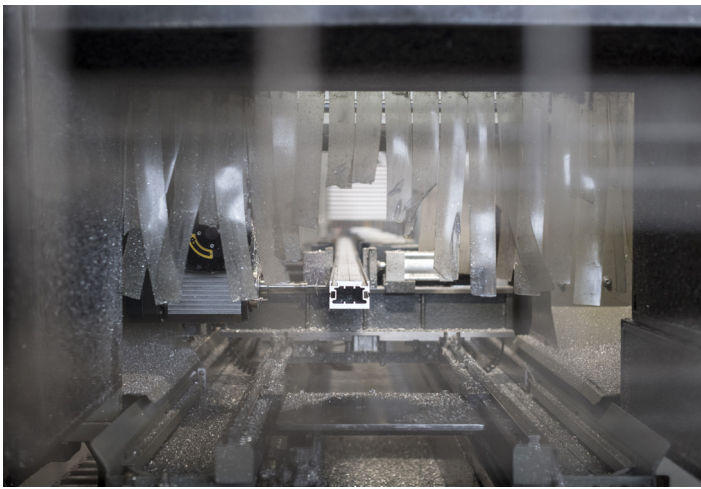
Qualità

Affidabilità



PICHLER Strutture in acciaio



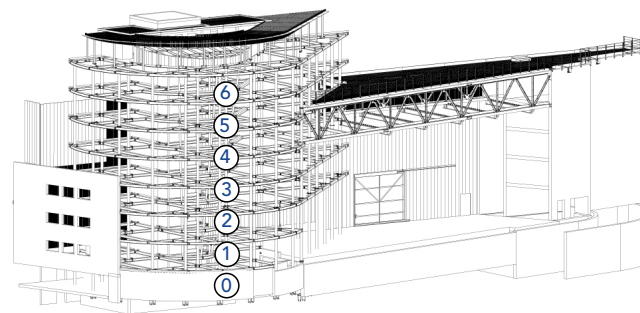


PICHLER Facciate

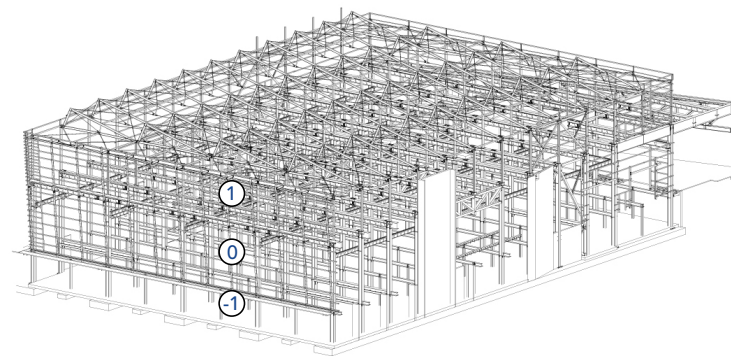
Sede principale



Uffici

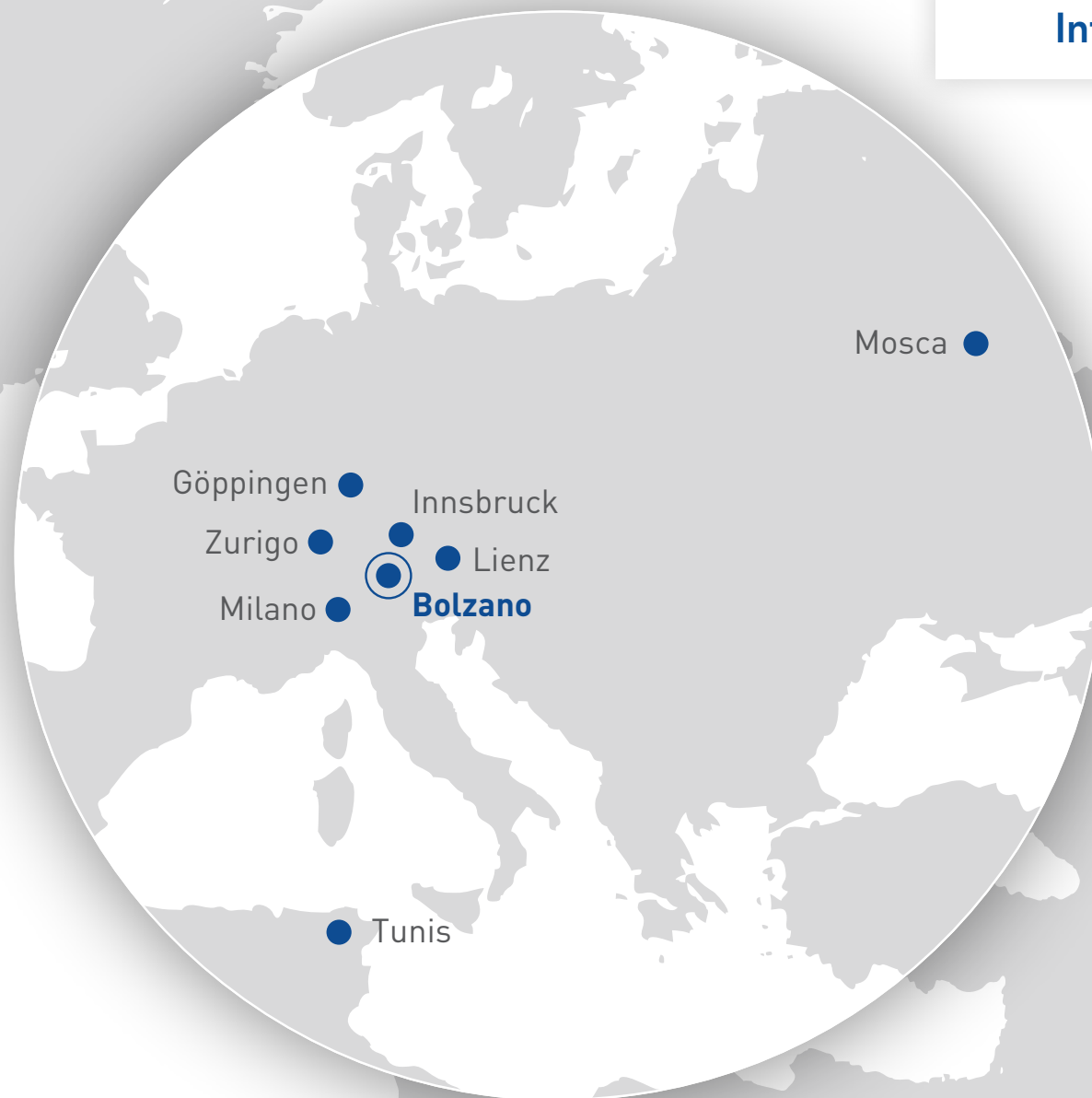


Produzione



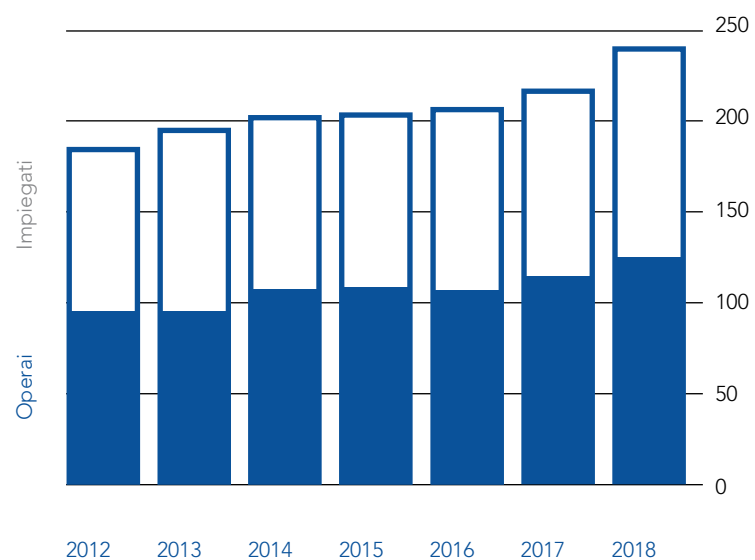
International

● New York

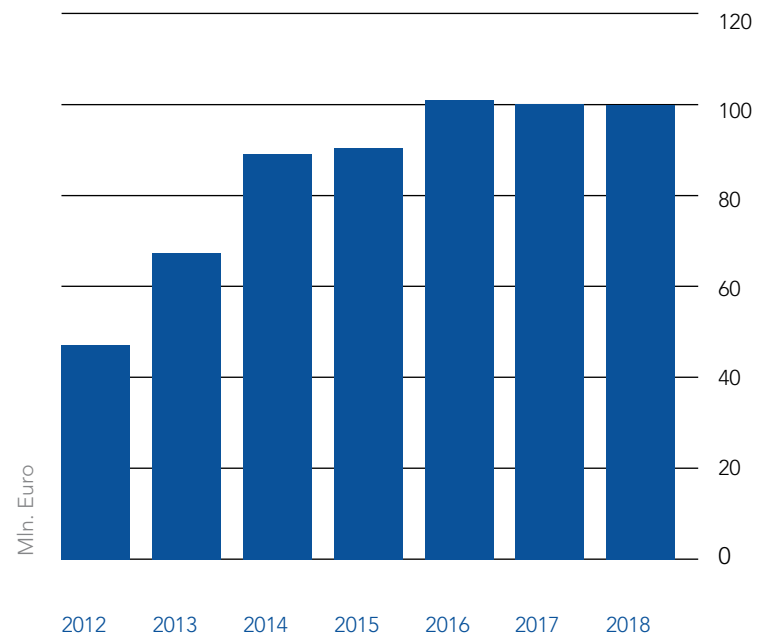


Dati & Fatti

Collaboratori

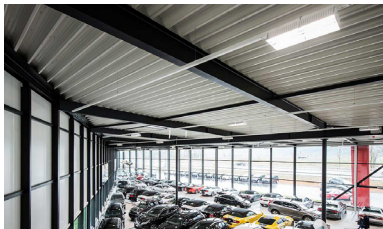


Valore della produzione

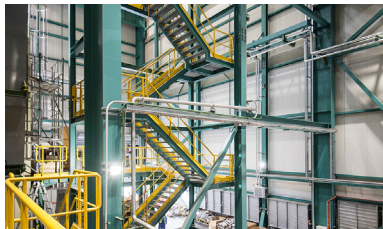




Referenze



AUTOMOTIVE



ENERGIA



STAZIONE + AEROPORTO



TEMPO LIBERO



PONTE



IMPIANTI INDUSTRIALI



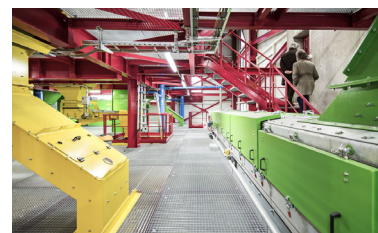
CENTRO COMMERCIALE



EDIFICIO INDUSTRIALE



MAGAZZINI



RICICLAGGIO



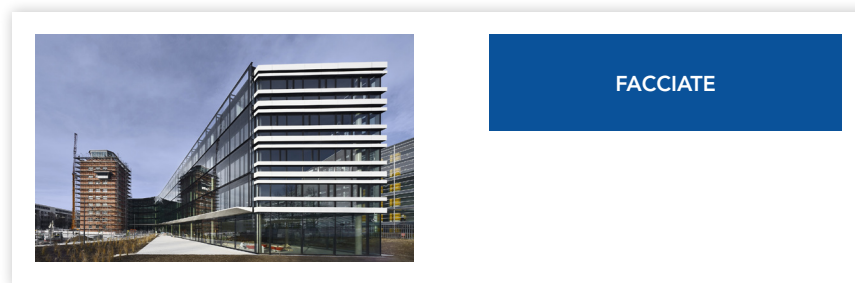
ALIMENTARI



COSTRUZIONE SPECIALE



LOGISTICA



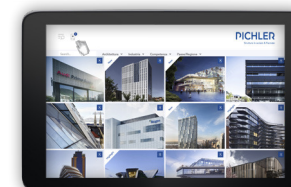
FACCIAE



PHARMA





Crea „My Reference Book“ in tre semplici passaggi:

1. Visita il nostro sito: www.pichler.pro e trova oltre 190 referenze
2. Segna i progetti che ti interessano
3. Crea „My Reference Book“ e fai clic su scarica PDF

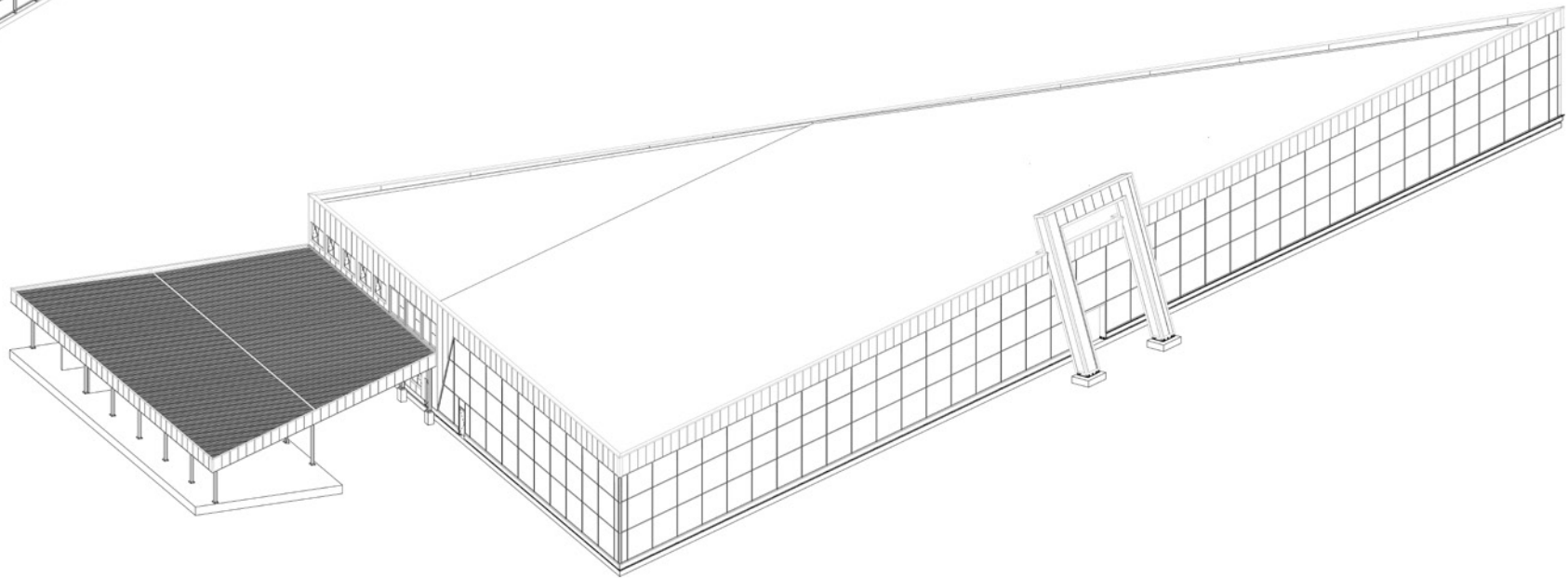
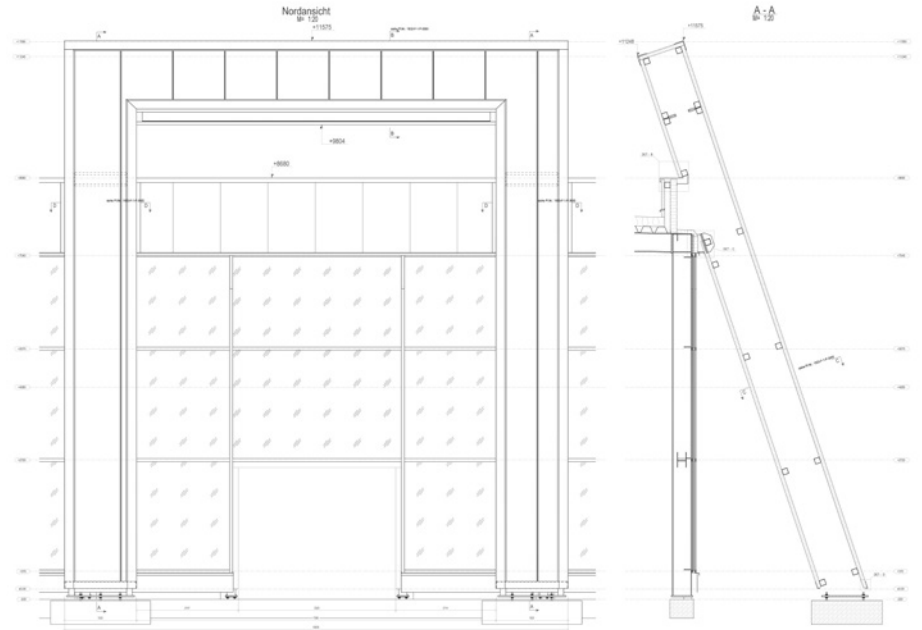
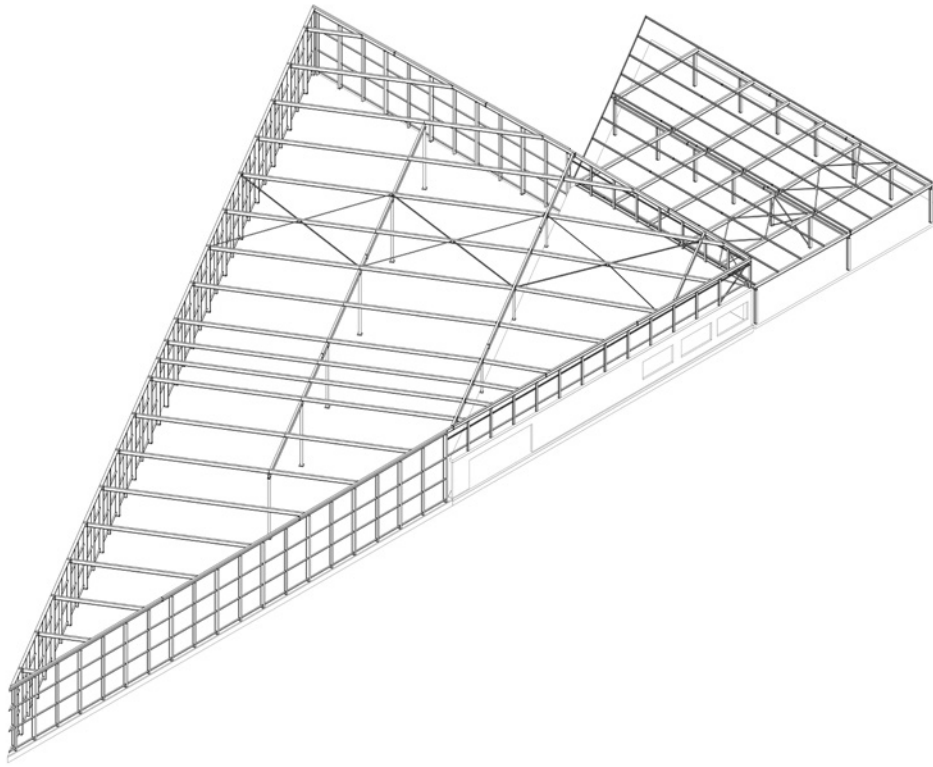


Autoland Reust

Showroom
fit+wellness Architekten

-  Bilten (Svizzera)
-  2014
-  Strutture in acciaio: 145 t
-  Facciate: 2080 m²





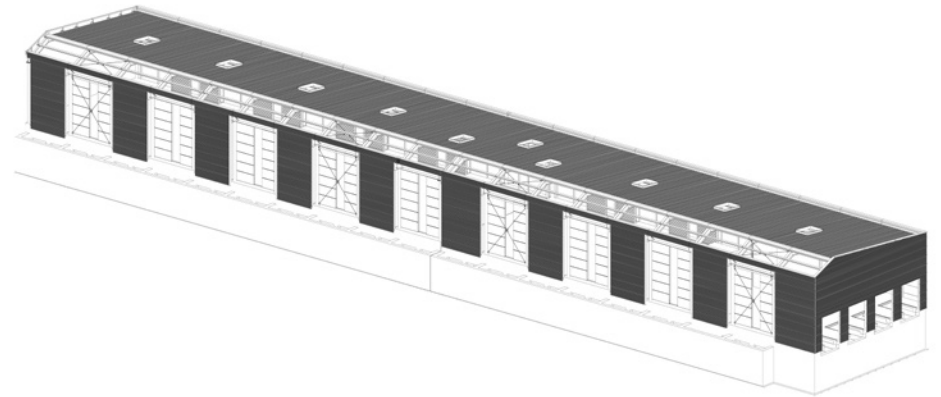
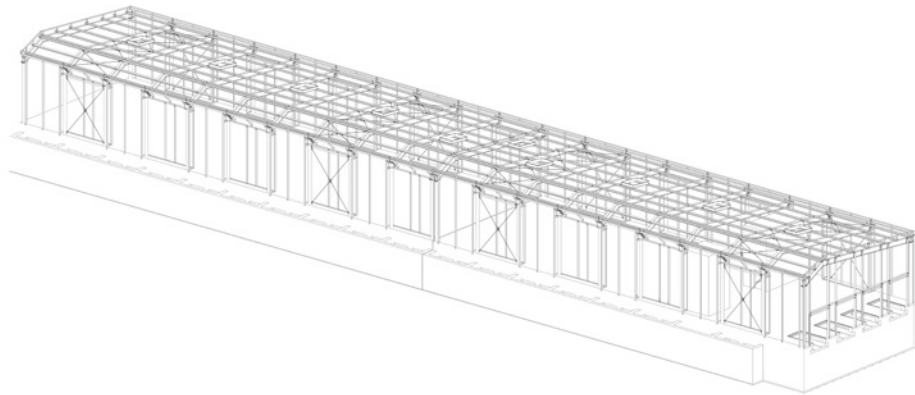


Subaru Italia

Sede Italia + showroom

Studio Quoin


-  Ala (Italia)
-  2007
-  Strutture in acciaio: 600 t
-  Facciate: 3300 m²





FIAT

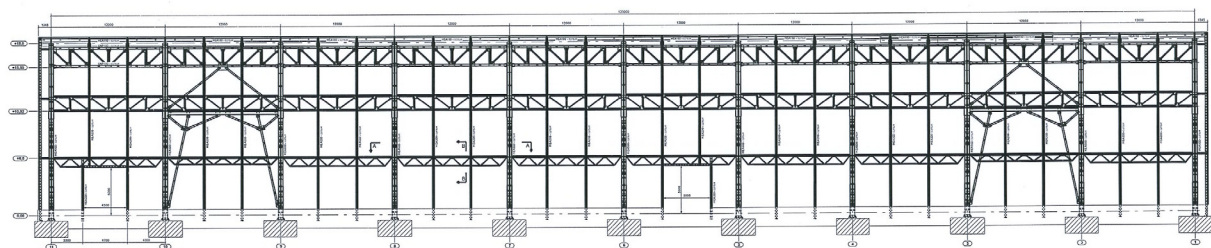
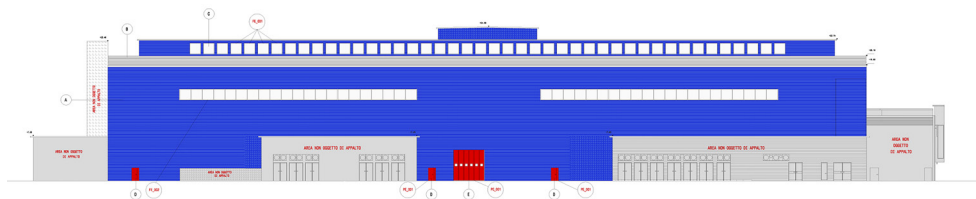
Nuova costruzione per reparto produttivo

 Cassino (Italia)

 2008

 Strutture in acciaio: 3800 t

AUTOMOTIVE



Aeroporto Bolzano Dolomiti (ABD)

Aeroporto

Lukas Burgauner

-  Bolzano (Italia)
-  2012
-  Strutture in acciaio: 200 t
-  Facciate: 1300 m²



© René Riller



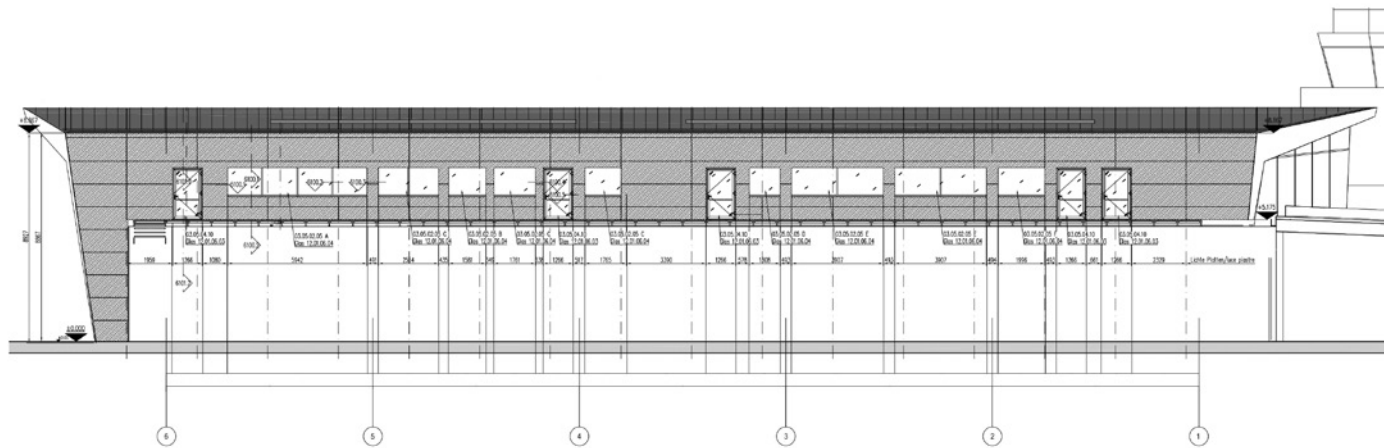
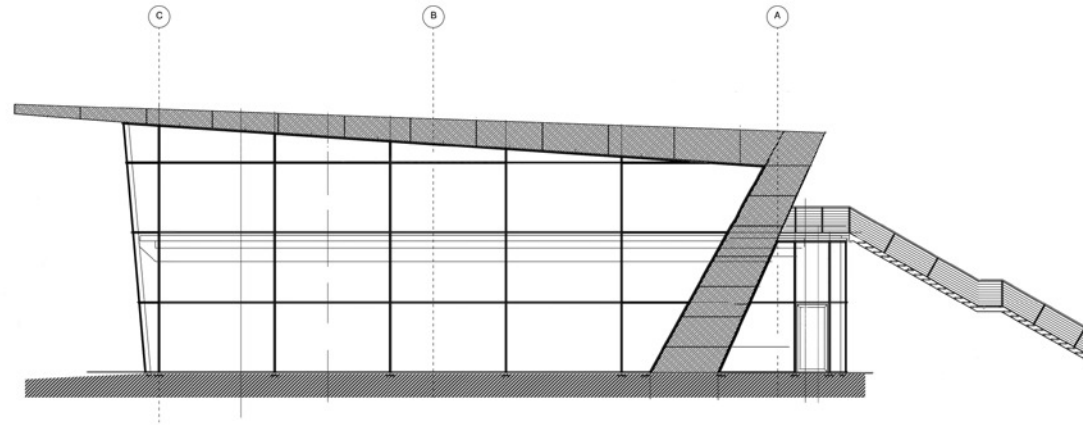
Hangar G

Hangar per aerei

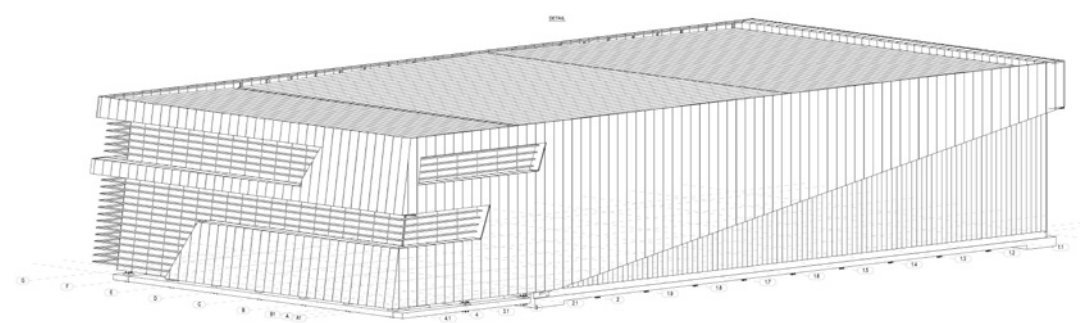
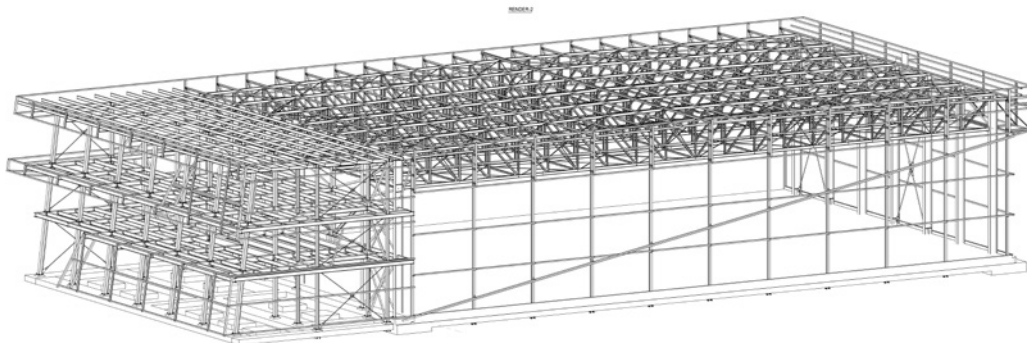
Lukas Burgauner

-  Bolzano (Italia)
-  2011
-  Strutture in acciaio: 250 t
-  Facciate: 300 m²

Aeroporto Bolzano Dolomiti (ABD)







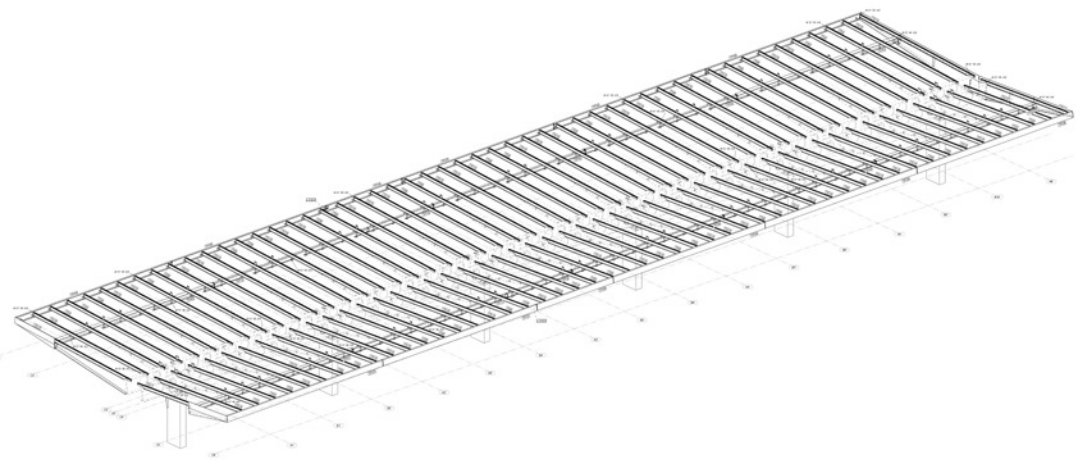
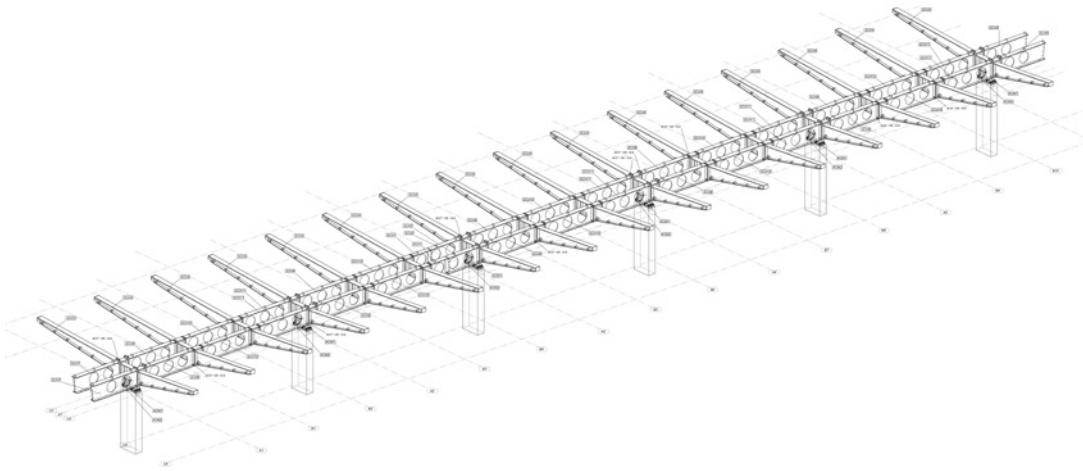
Hangar G



Jona

Stazione dei treni e degli autobus
ARGE Oliver Schwarz + Margareth Blumer

-  Rapperswil-Jona (Svizzera)
-  2015
-  Strutture in acciaio: 162 t
-  Facciate: 3340 m²






ÖBB

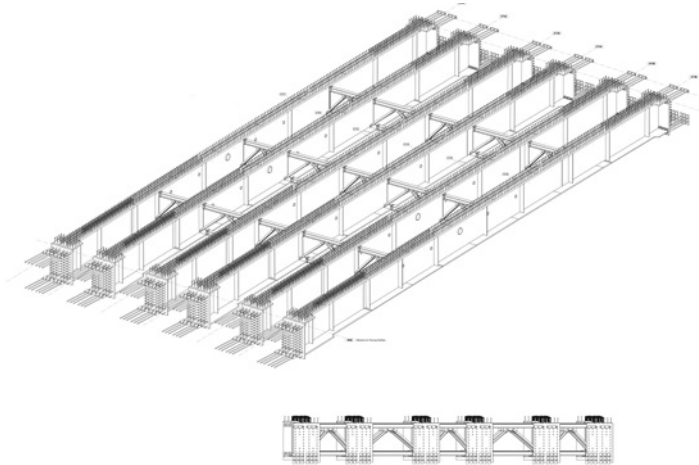
Stazione centrale

ARGE "Wiener Team" (Werner Consult - ISP - STOIK - TECTON - PISTECKY) + Hotz/Hoffmann - Wimmer

 Vienna (Austria)

 2013




 Strutture in acciaio: 800 t

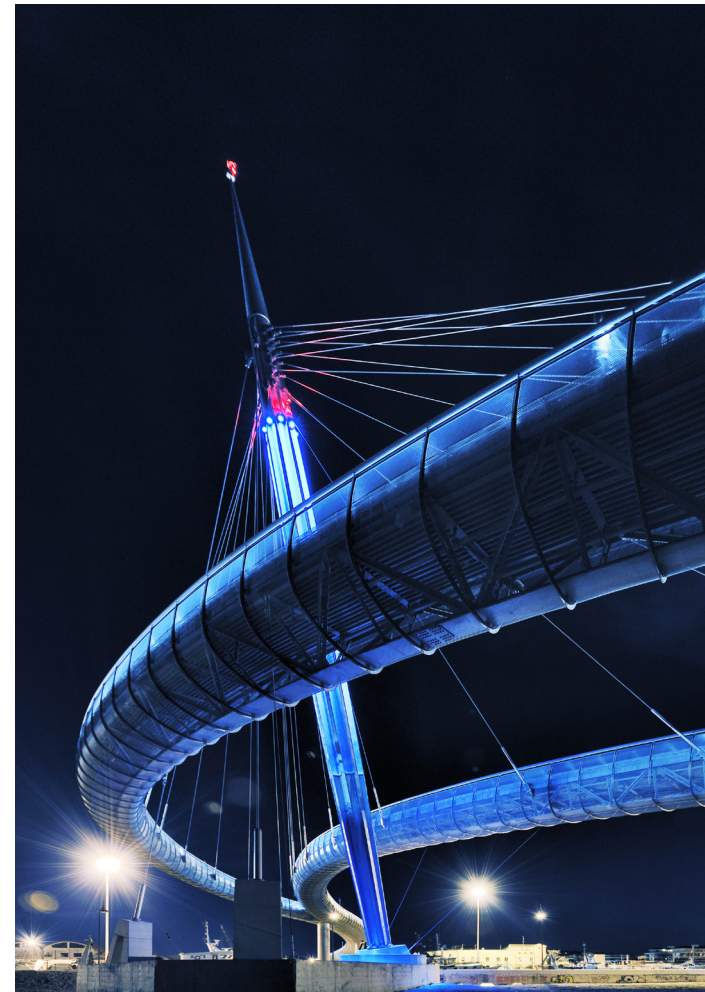


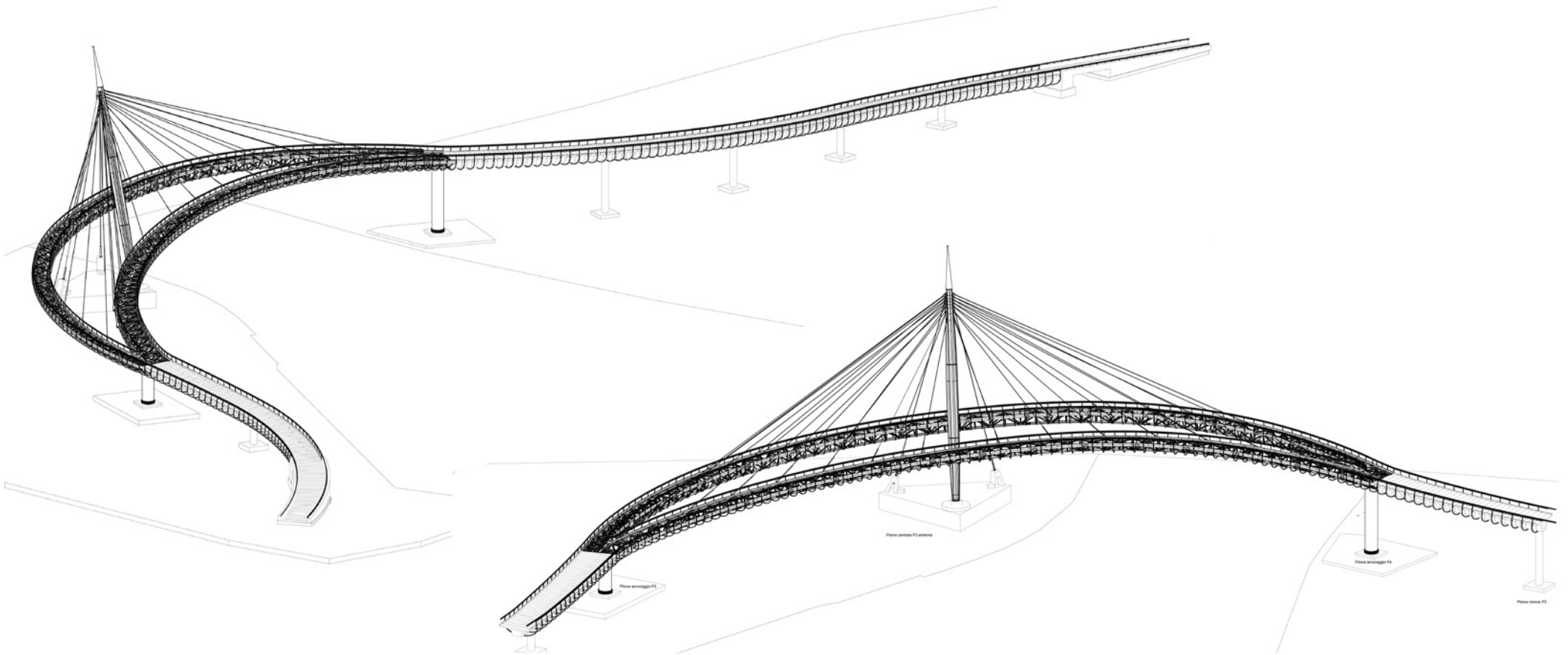
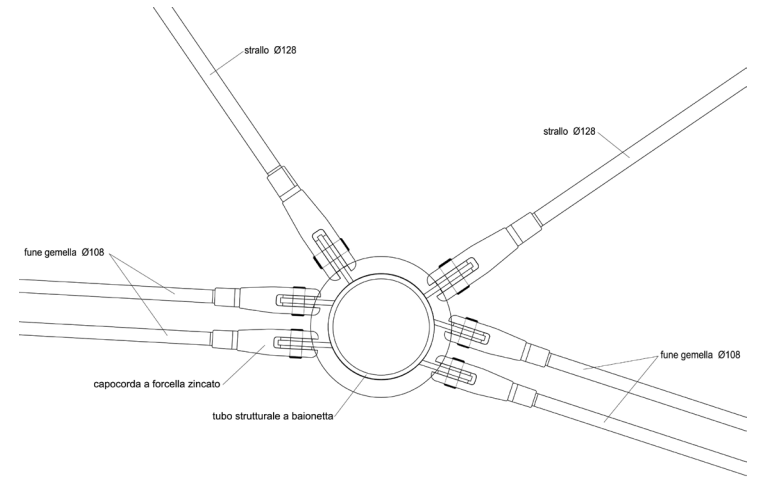
Ponte del mare

Ponte pedociclabile

Pichler Architects

-  Pescara (Italia)
-  2009
-  Strutture in acciaio: 500 t






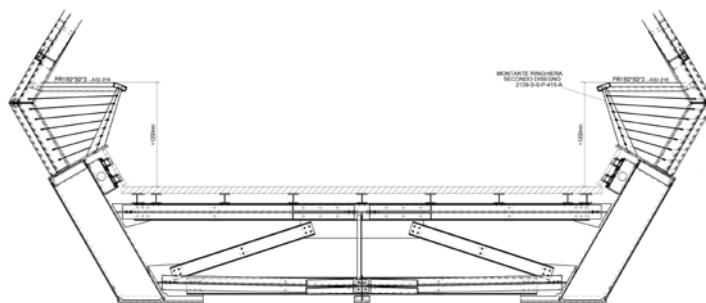
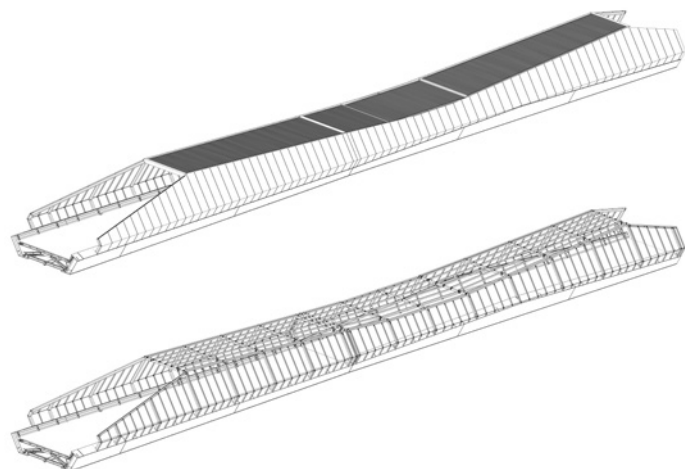


Twenty

Ponte pedociclabile

Aig Service Associati Partner

-  Bolzano (Italia)
-  2015
-  Strutture in acciaio: 402 t





The Squire

Ponte di collegamento tra "The Squire" e il parcheggio nell'aeroporto

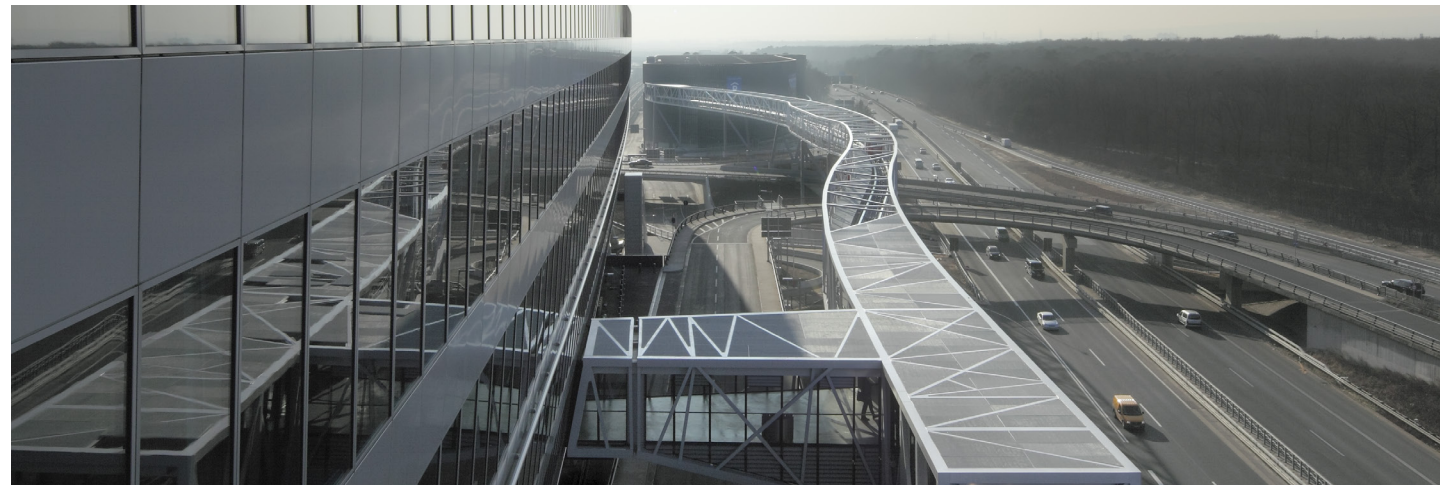
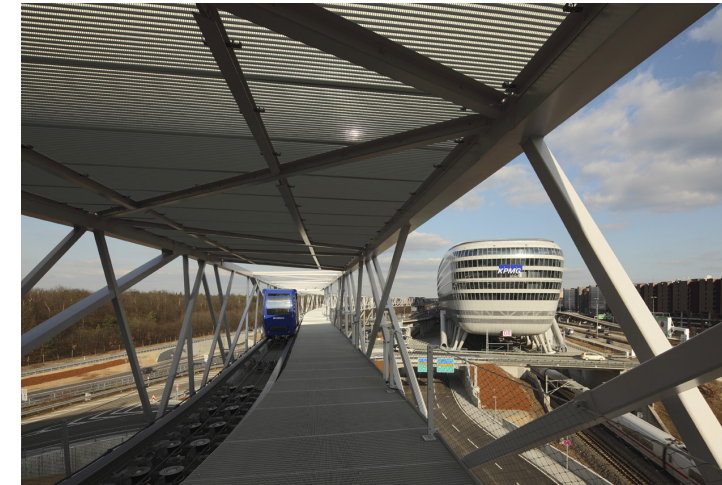
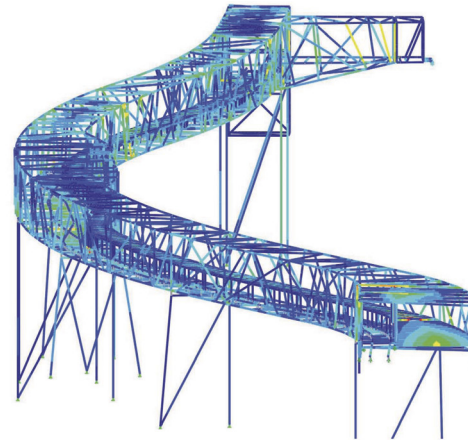
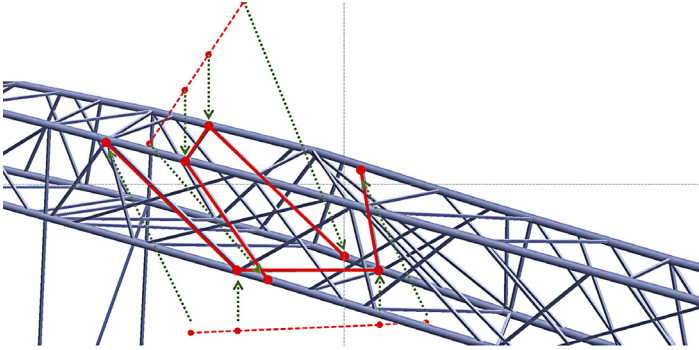
Lengfeld Willisch Architekten + Bollinger Grohmann Ingenieure

 Francoforte (Germania)

 2012




 Strutture in acciaio: 530 t

 Facciate: 500 m²

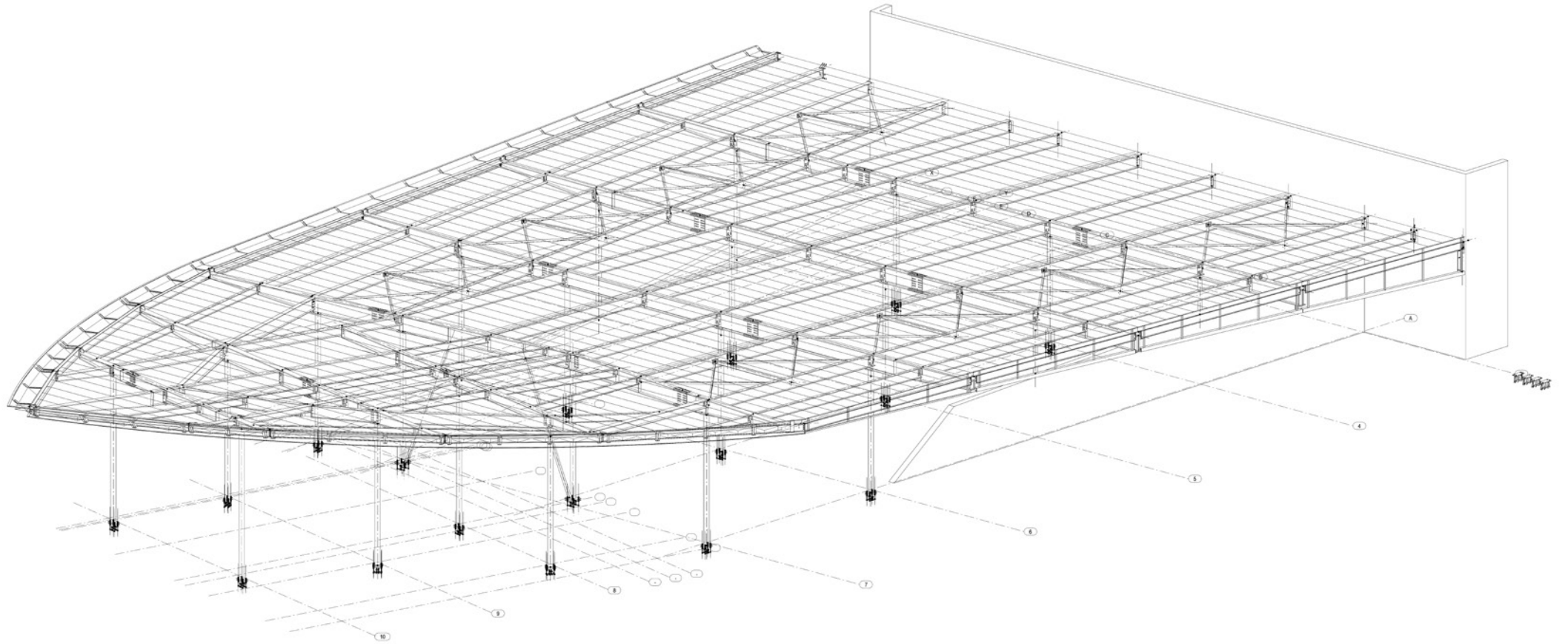


MPreis

Supermercato
Hans Peter Machné

-  Matri (Austria)
-  2003
-  Strutture in acciaio: 120 t






Lidl

Supermercato + parcheggio

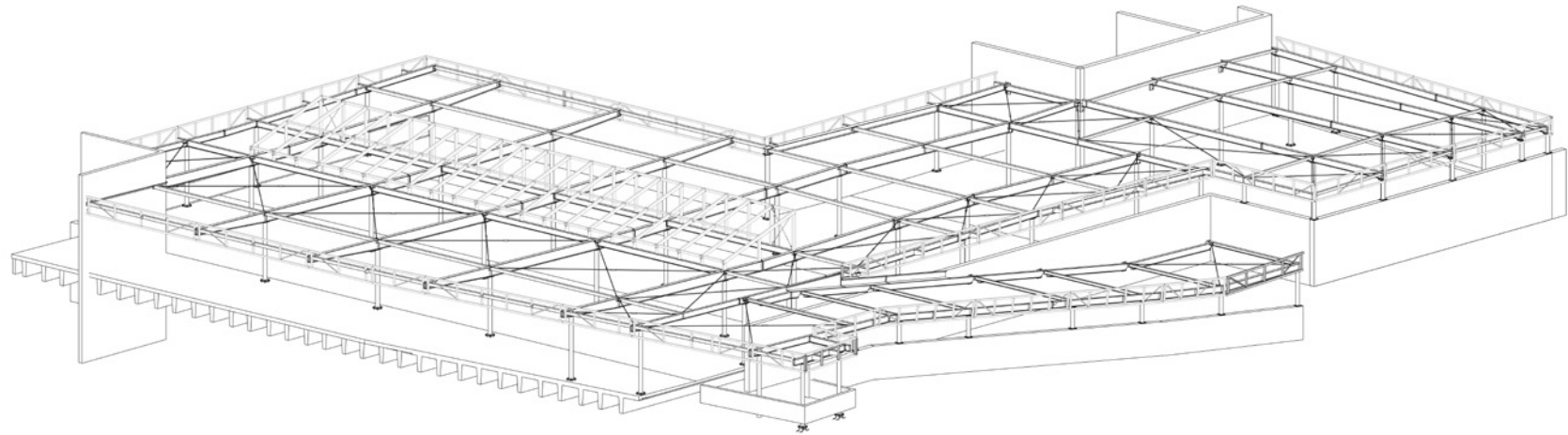
P+P Generalplaner

 Schwaz (Austria)

 2012

 Strutture in acciaio: 65 t


 Facciate: 160 m²





IperPoli

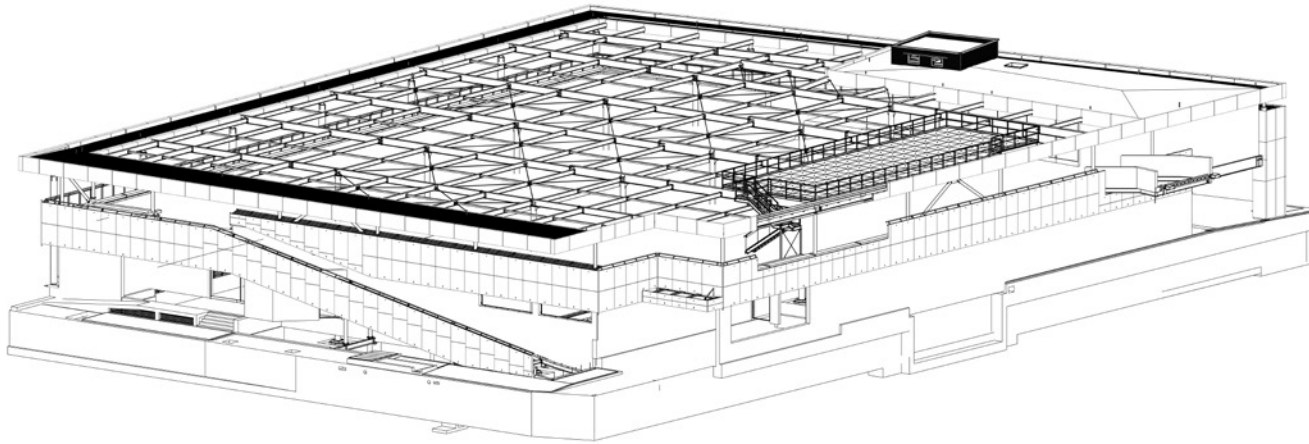
Supermercato
Pichler Architects

 Trento (Italia)

 2015

 Strutture in acciaio: 450 t





 Facciate: 2000 m²

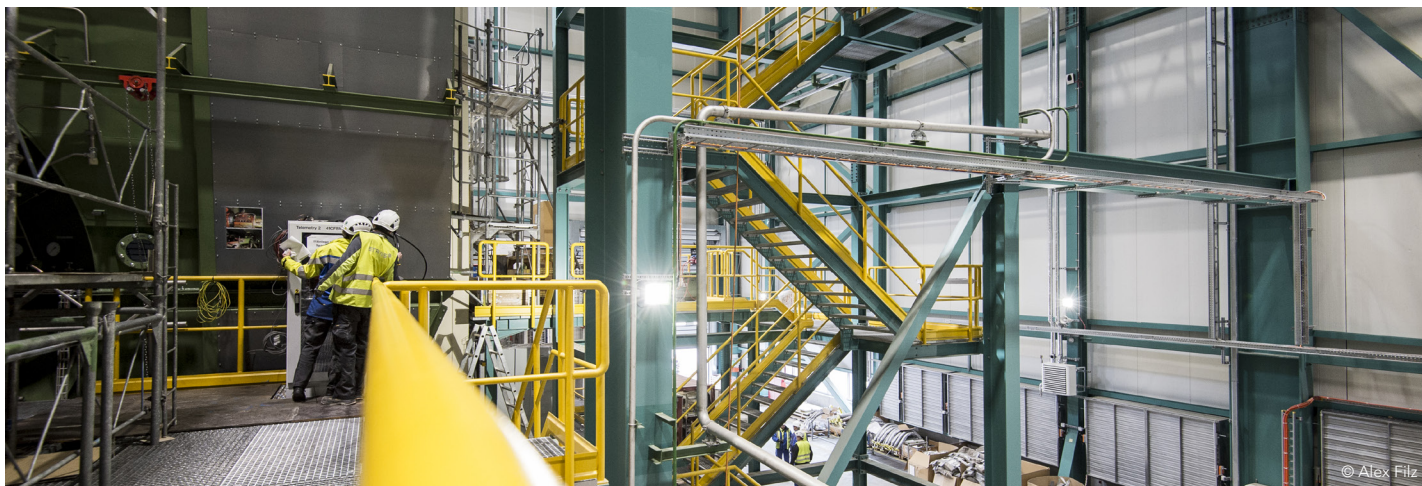


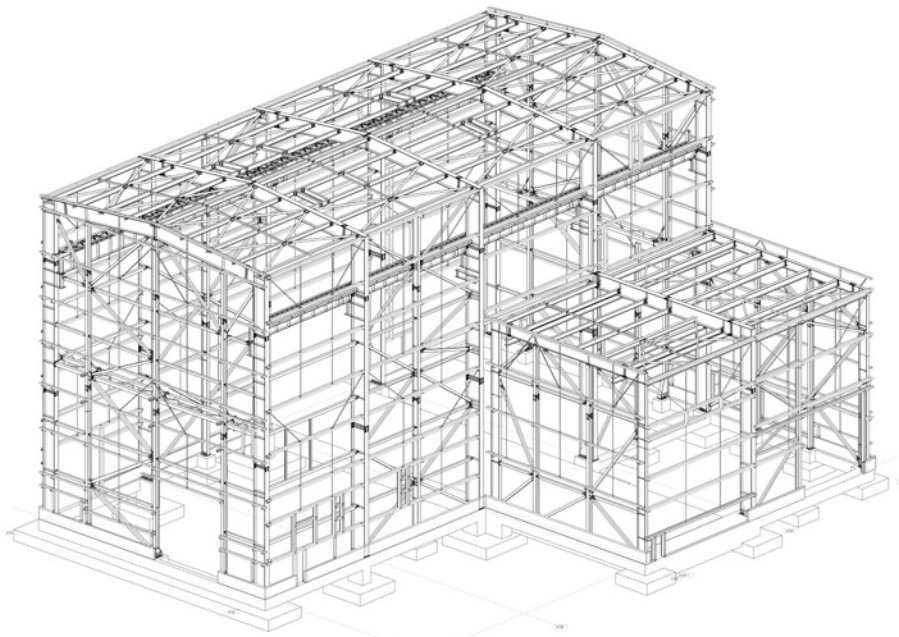
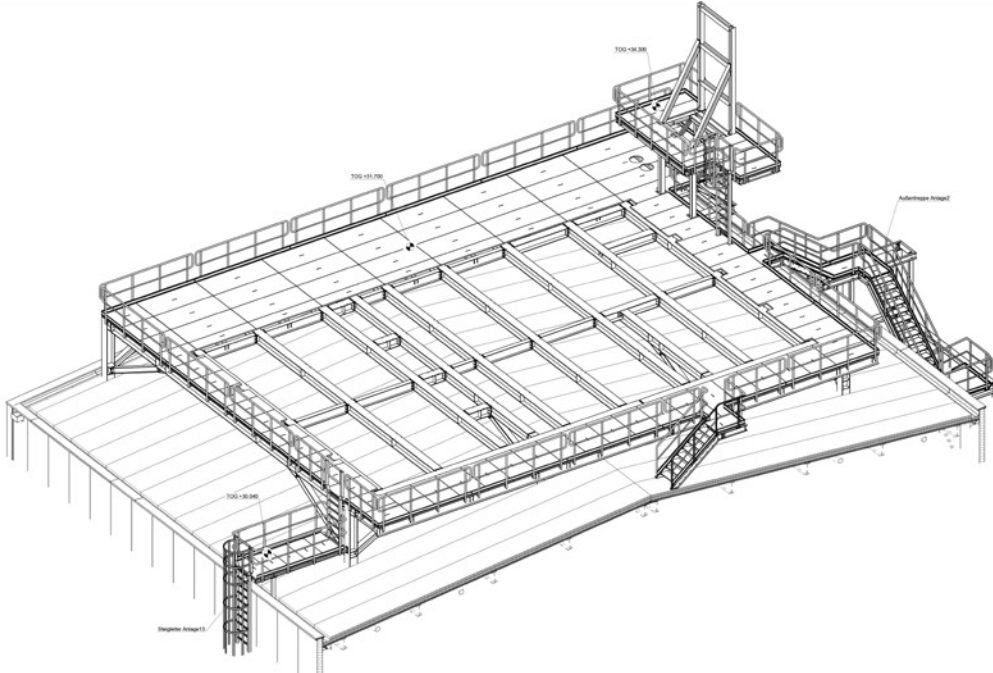
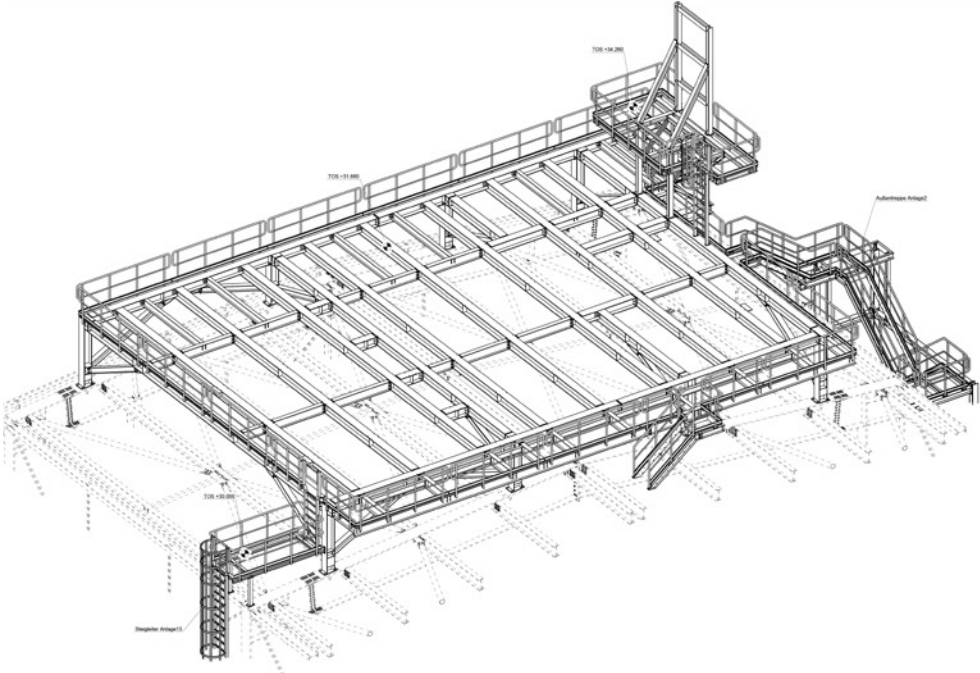
GE General Electric

Impianto industriale

Gruner Ingenieure

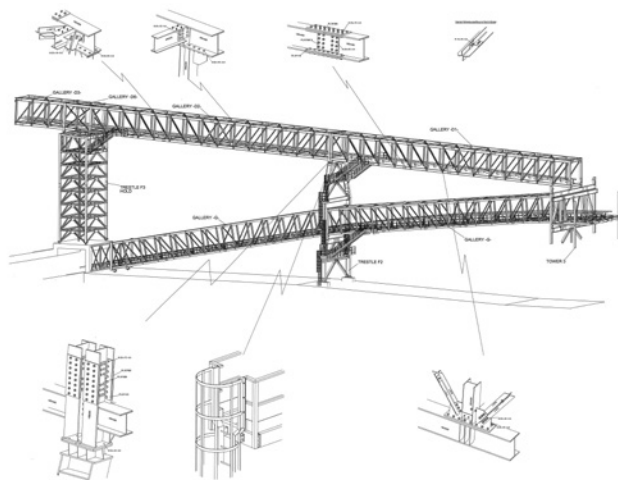
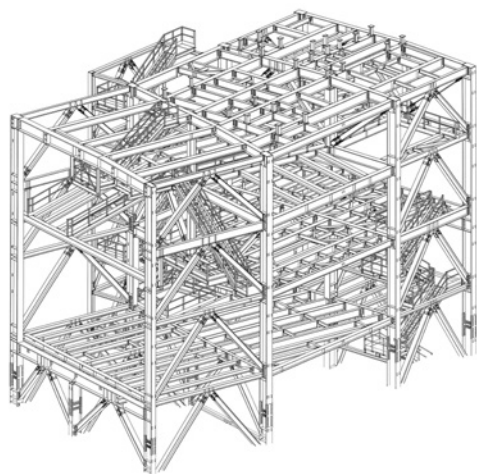
-  Birr (Svizzera)
-  2015
-  Strutture in acciaio: 1200 t
-  Facciate: 8450 m²





Enel

Centrale a carbone

 Civitavecchia (Italia) 2009 Strutture in acciaio: 10000 t Facciate: 65000 m²



Teleriscaldamento Chiusa

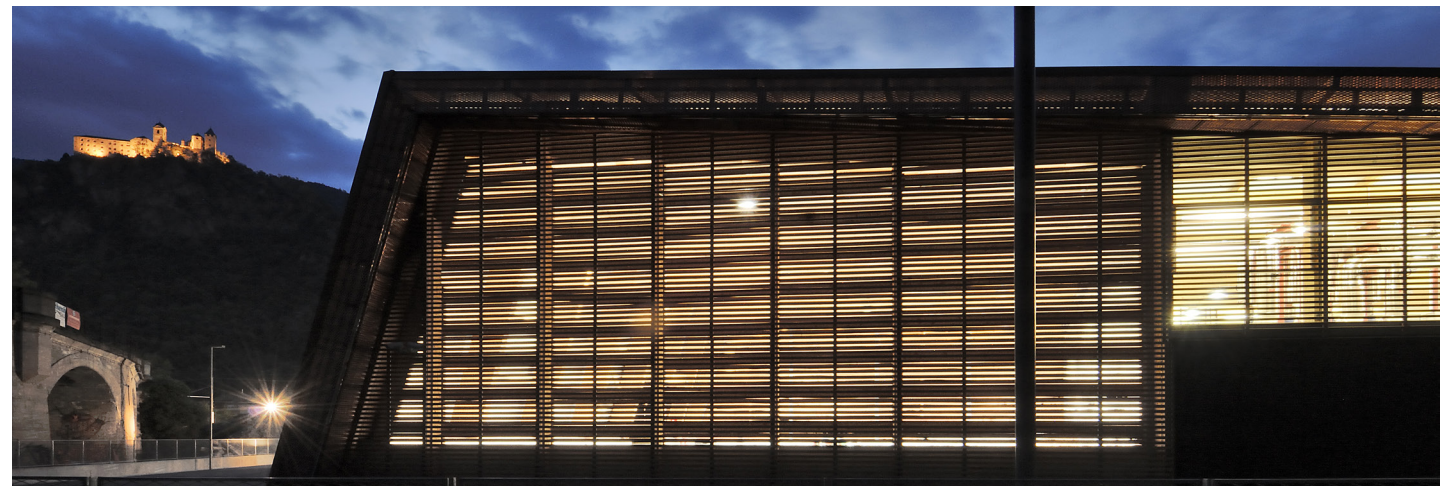
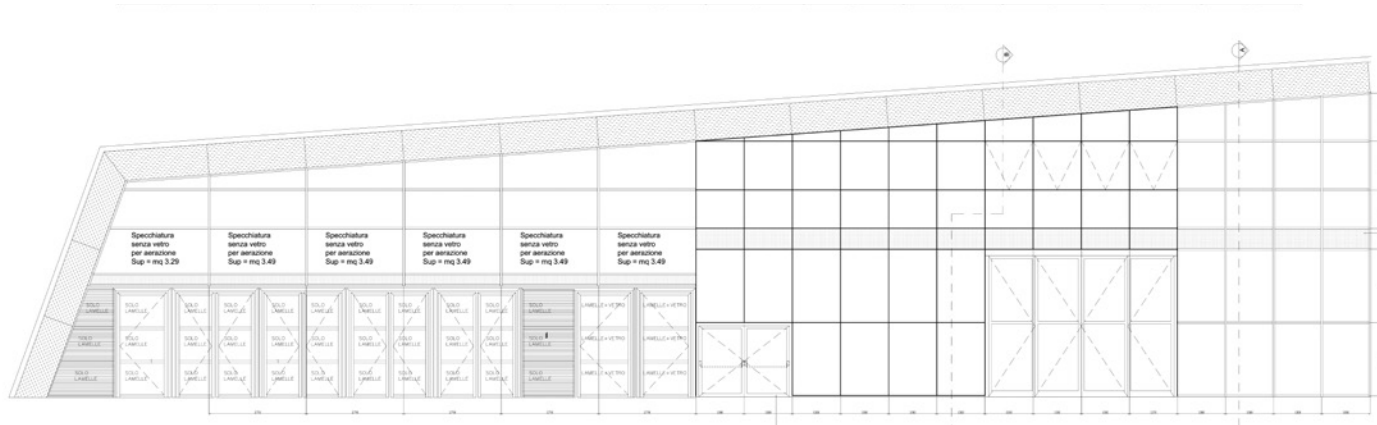
Centrale teleriscaldamento

Roland Baldi

 Chiusa (Italia)

 2007


 Facciate: 1350 m²



Seilbahn Zugspitze


Stazione a monte e a valle della funivia

Hasenauer Architekten

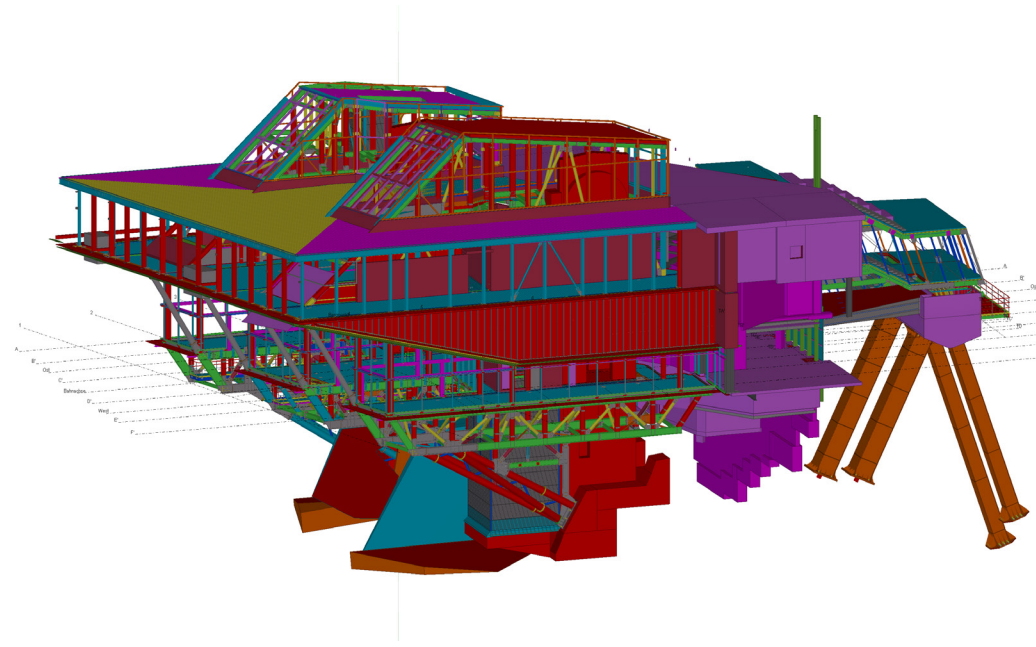
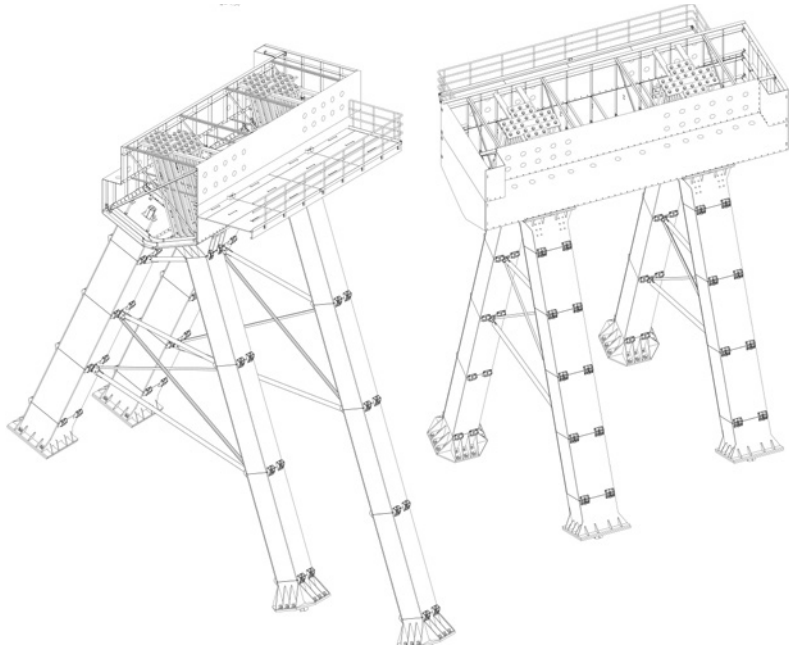
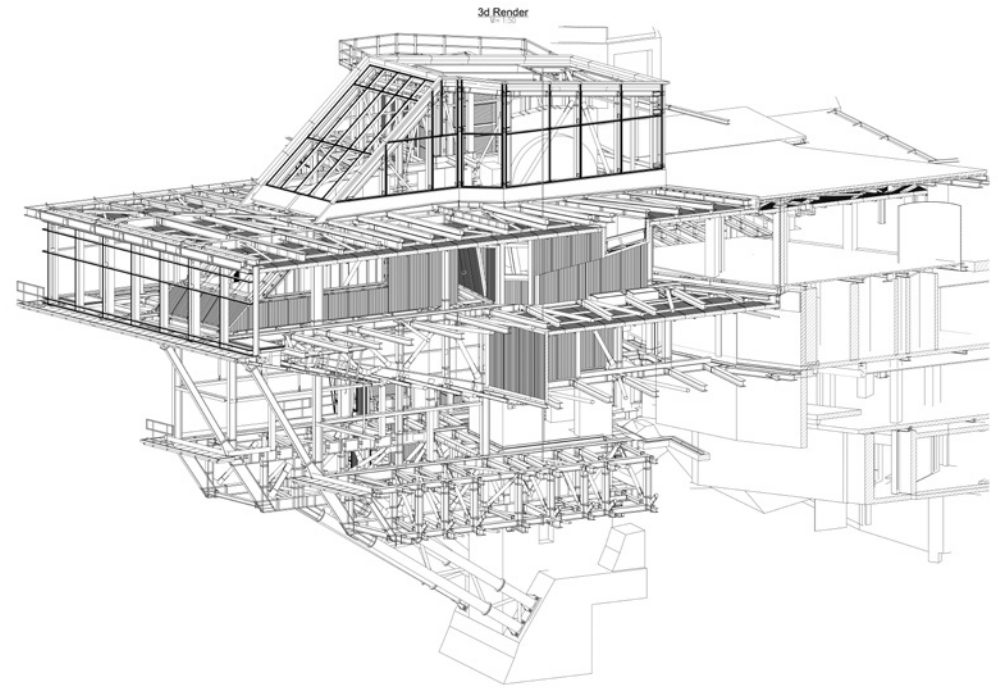
 Garmisch (Germania)

 2018

 Strutture in acciaio: 1300 t





 Facciate: 8900 m²

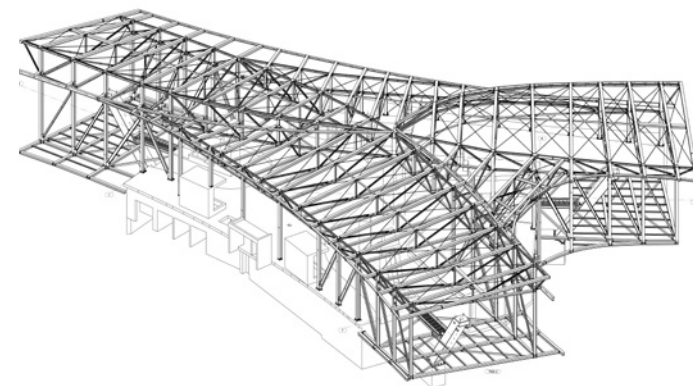
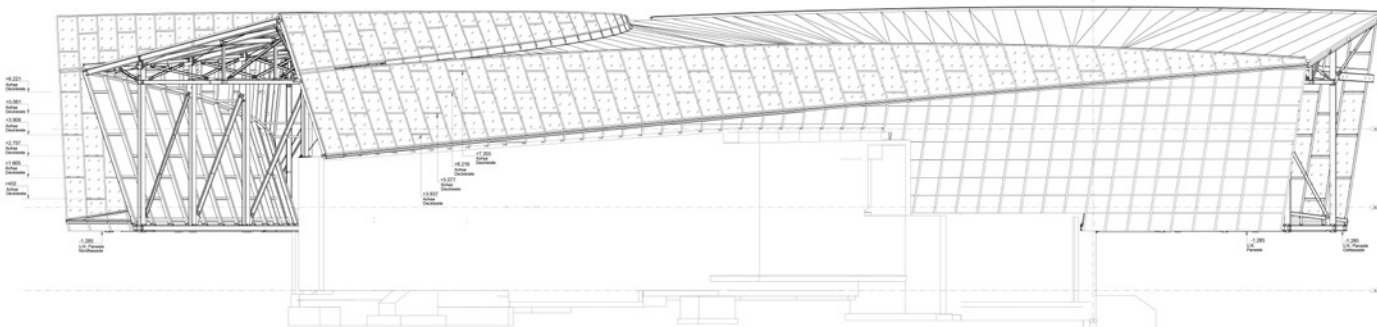




Trittkopfbahn

Stazione a monte, intermedia e a valle della cabinovia
Jäger Architektur

-  Zürs (Austria)
-  2016
-  Strutture in acciaio: 570 t
-  Facciate: 3600 m²






Bergisel

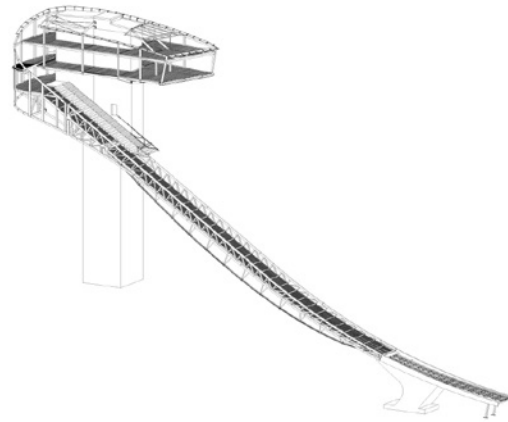
Trampolino olimpico da sci

Zaha Hadid Architects

 Innsbruck (Austria)

 2002

 Strutture in acciaio: 173 t



Bad Hindelang


Stazione a valle della seggiovia

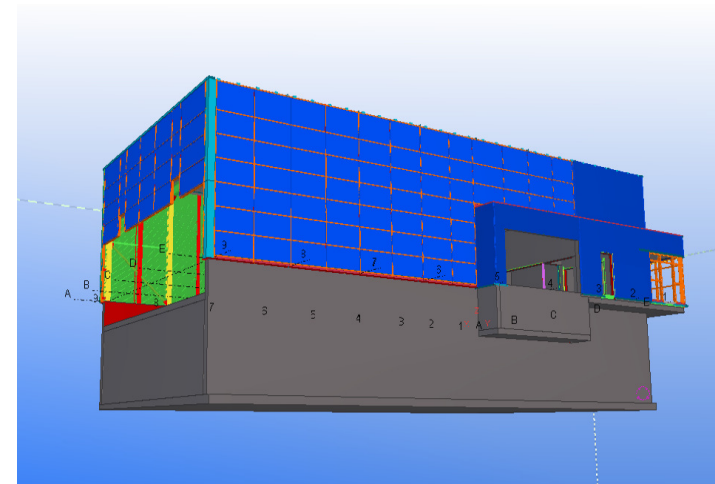
Gaugelhofer & Ganyecz

 Bad Hindelang (Germania)

 2015

 Strutture in acciaio: 180 t

 Facciate: 4360 m²






Thermen & Badewelt

Spa e centro benessere

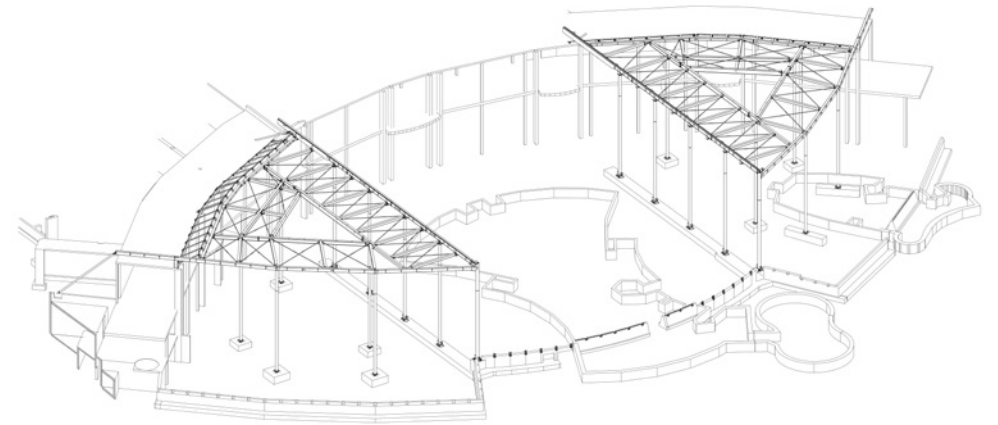
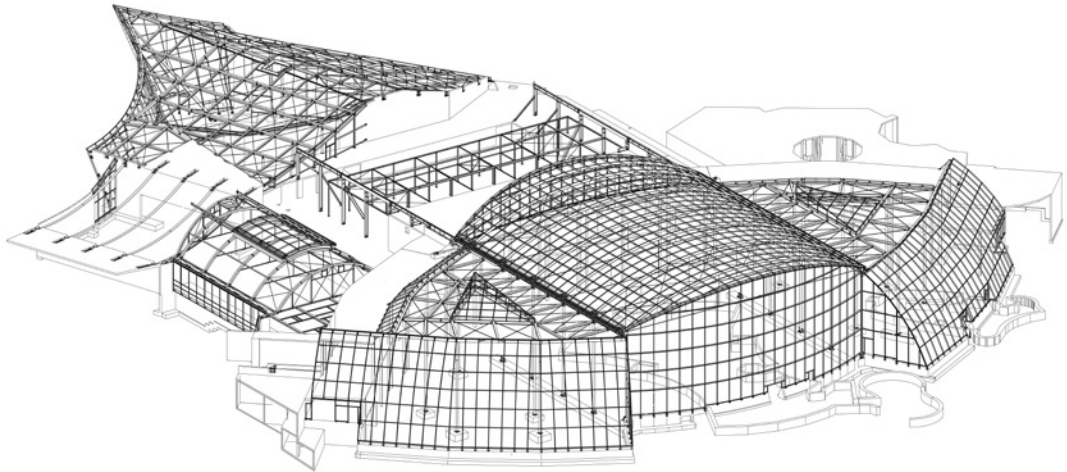
WUND Unternehmensgruppe

 Sinsheim (Germany)

 2012

 Strutture in acciaio: 800 t


 Facciate: 7000 m²



Şişecam Flat Glass Italy

Fabbrica di vetro

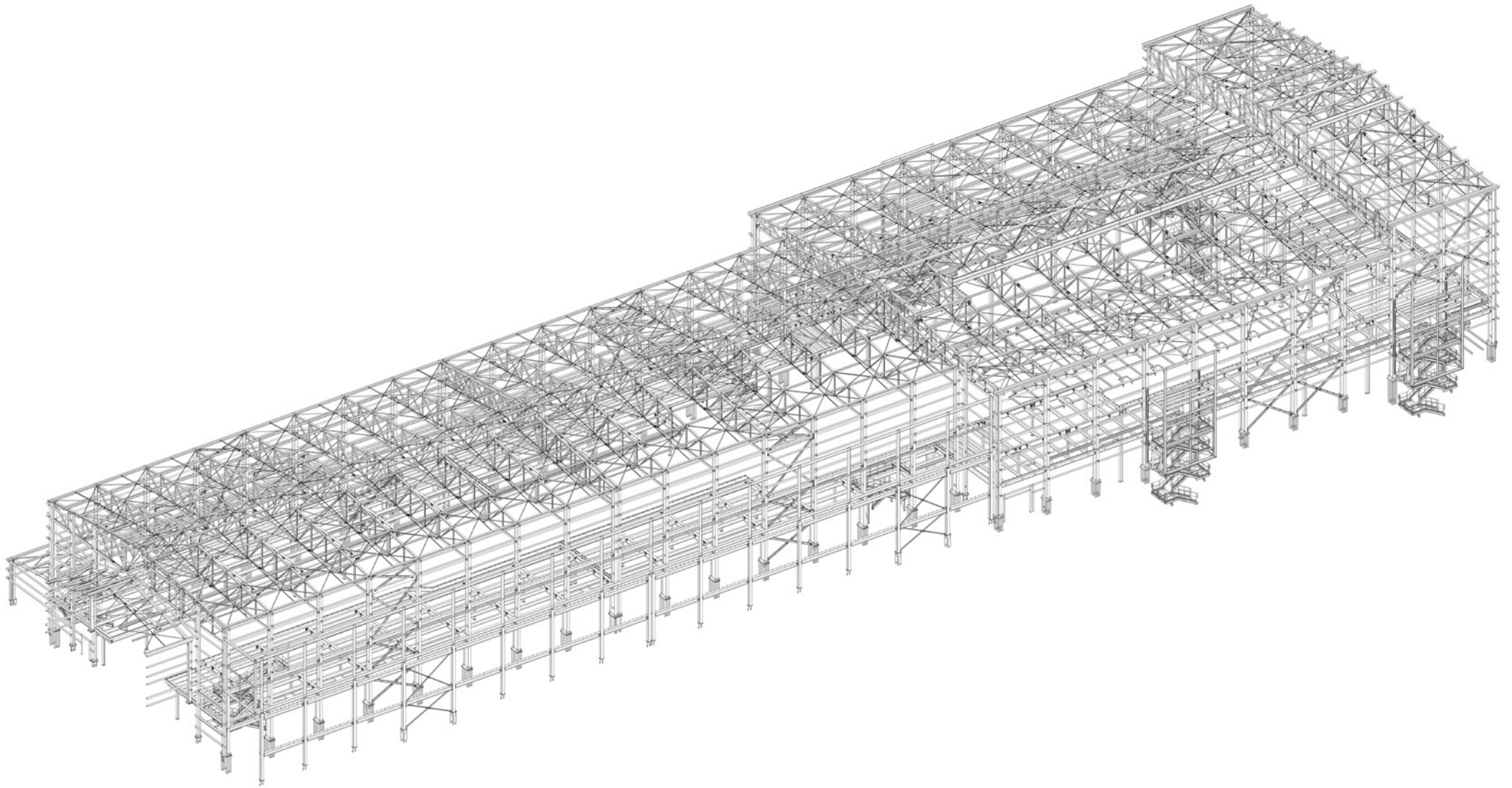
Interstudio

 San Giorgio di Nogaro (Italia)

 2010

 Strutture in acciaio: 3100 t

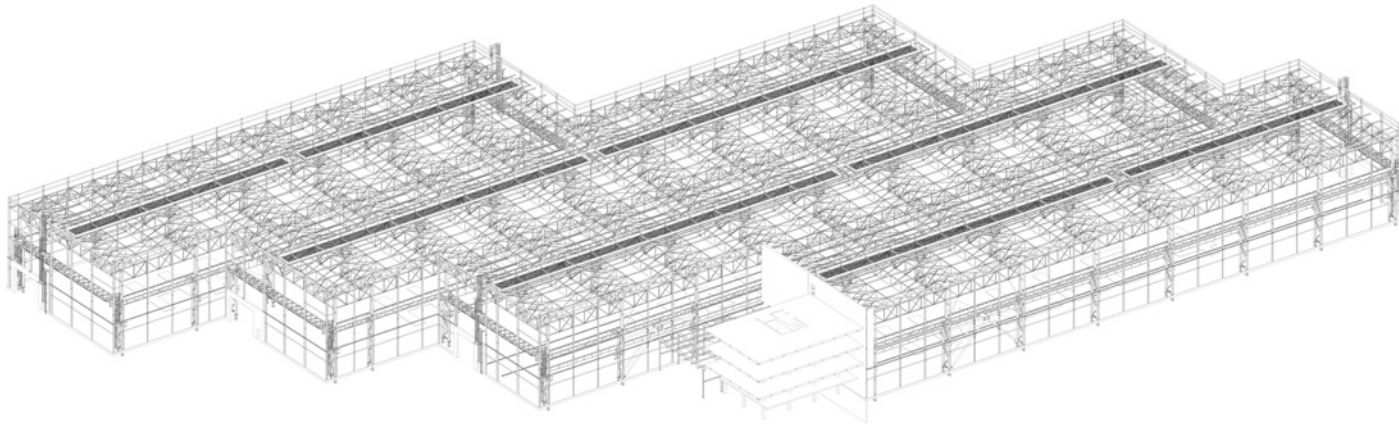
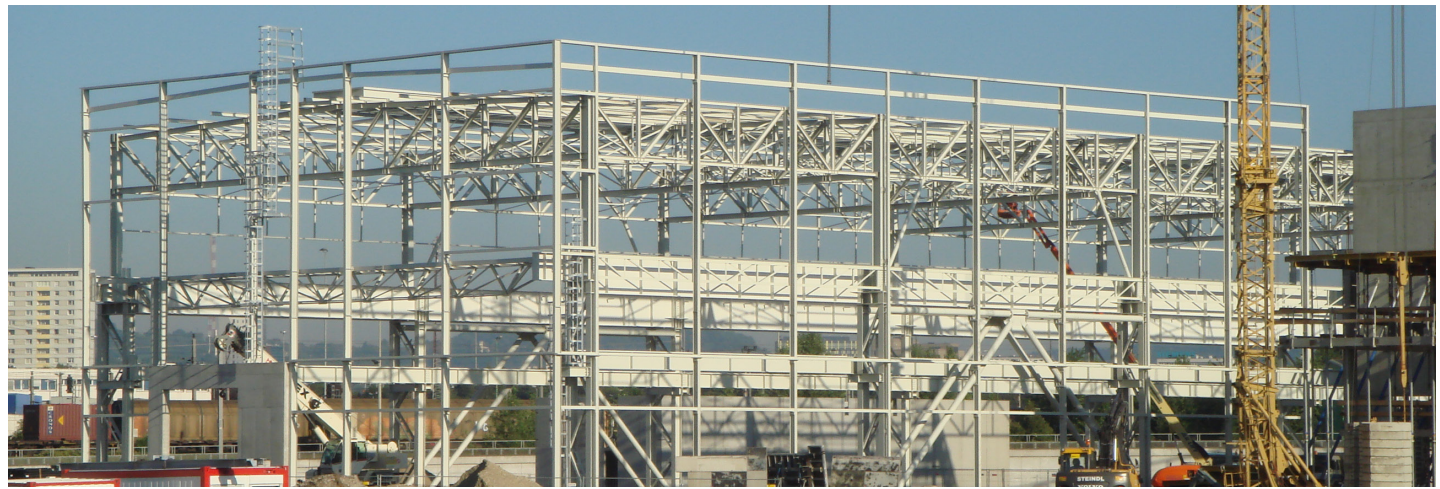




Voestalpine

Centro di elaborazione

-  Linz (Austria)
-  2008-2013
-  Strutture in acciaio: 5500 t
-  Facciate: 12830 m²






KCP

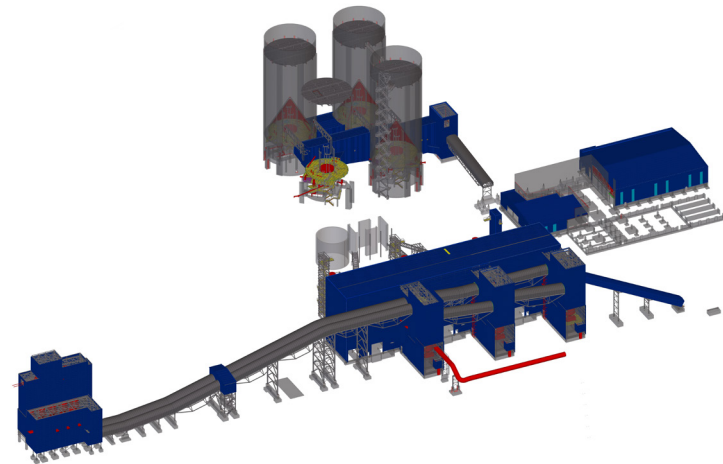
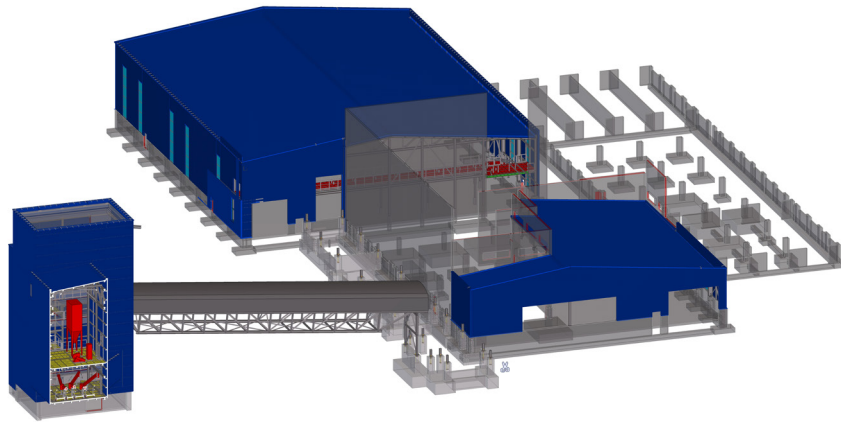
Cementificio

Kottmann

 Kaluga (Russia)

 2013

 Strutture in acciaio: 6500 t



Atzwanger

Sede centrale con edificio amministrativo e magazzino

Pichler Architects

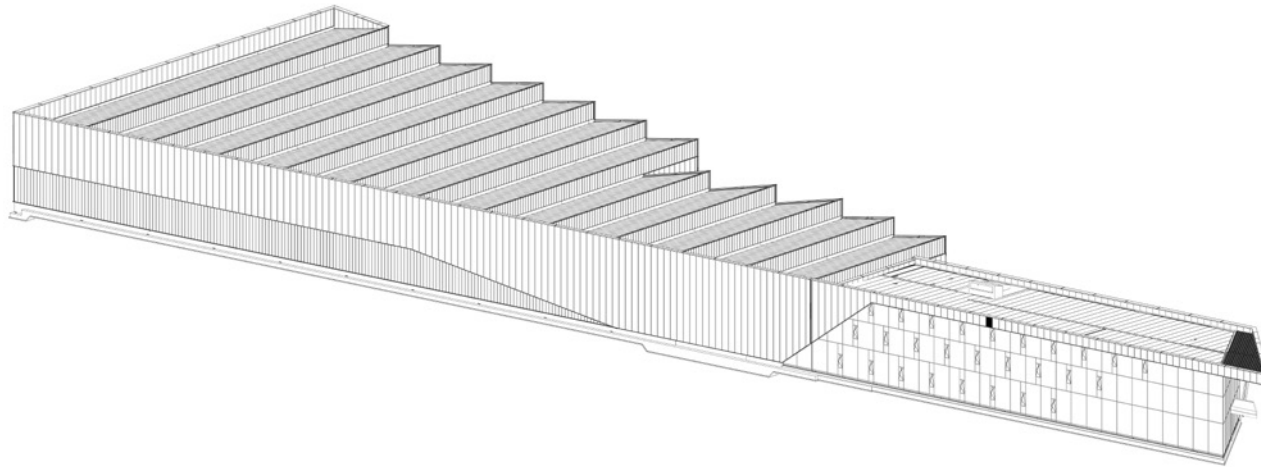
-  Bolzano (Italia)
-  2012
-  Strutture in acciaio: 450 t
-  Facciate: 4750 m²



Pertinger

Sede principale
Pichler Architects

-  Varna (Italia)
-  2014
-  Strutture in acciaio: 470 t
-  Facciate: 2300 m²






Haas

Nuova lavanderia con uffici

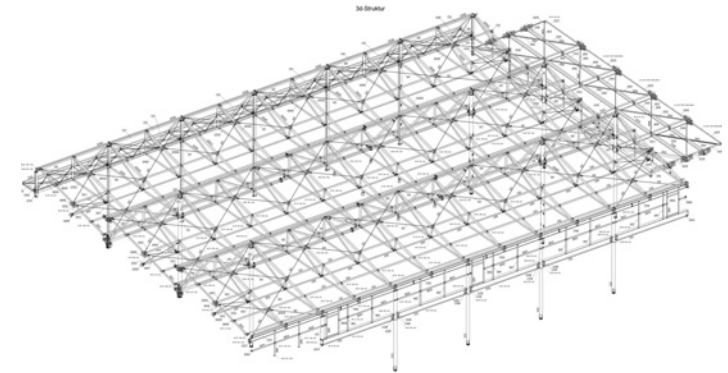
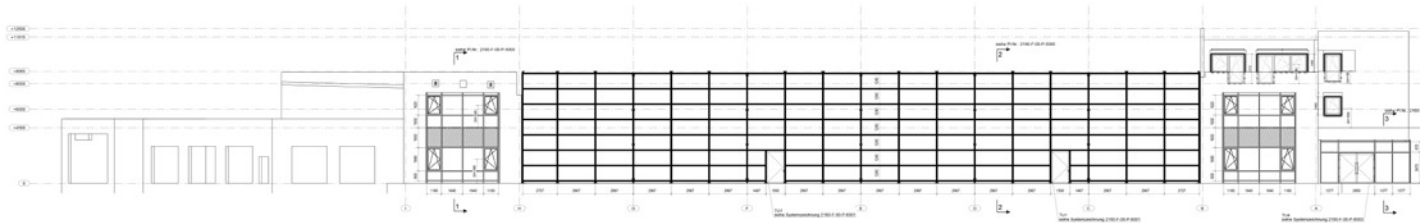
Pichler Architects

 Vadena (Italia)

 2016

 Strutture in acciaio: 220 t

 Facciate: 500 m²



Ceramica Sant'Agostino MAV


Magazzino Autoportante Verticale (MAV)

ArchLiving

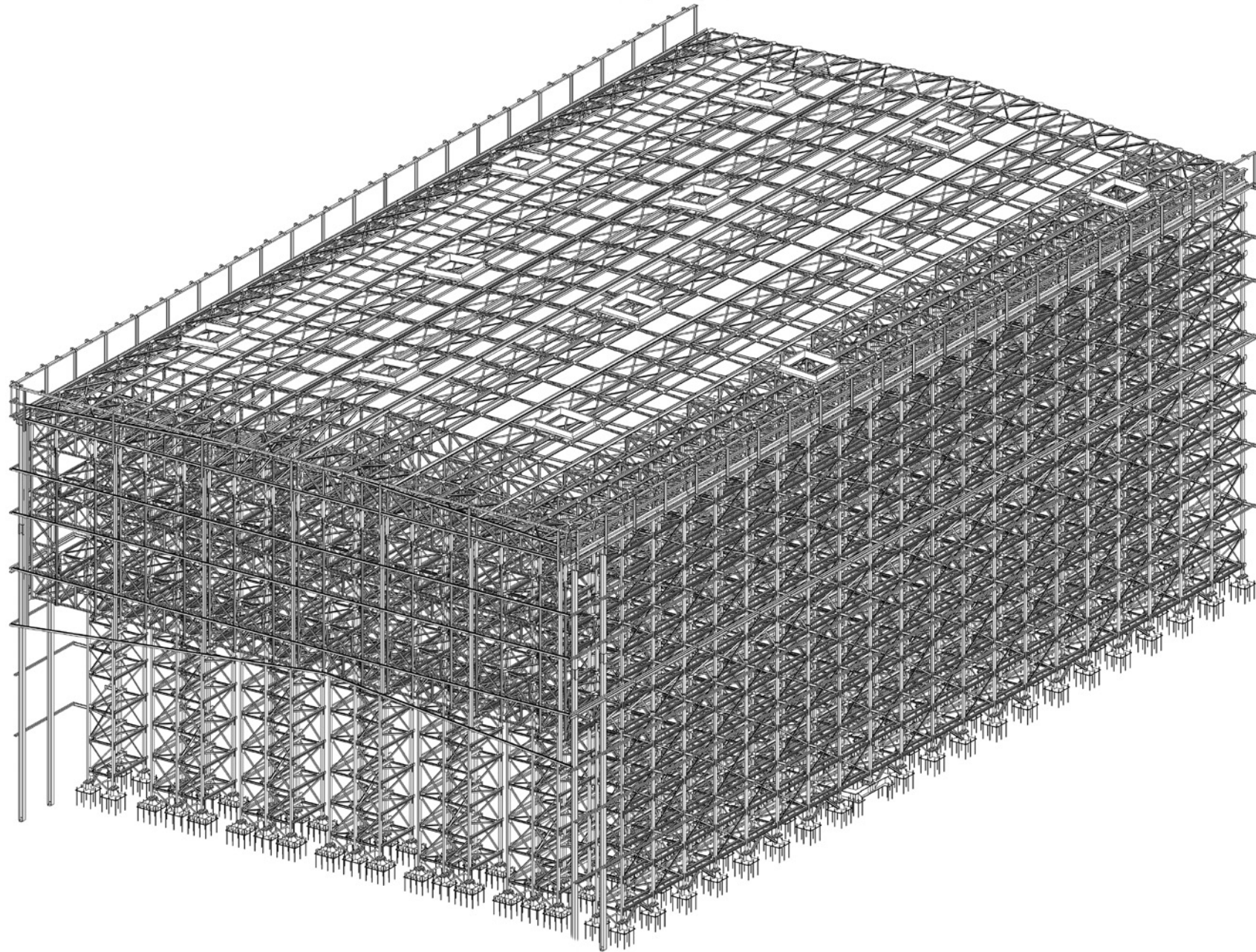
 Sant'Agostino (Italia)

 2016

 Strutture in acciaio: 2500 t




 Facciate: 8700 m²

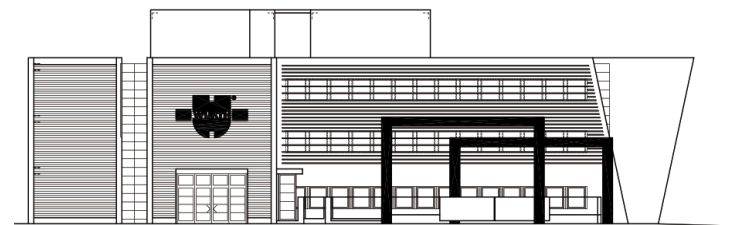
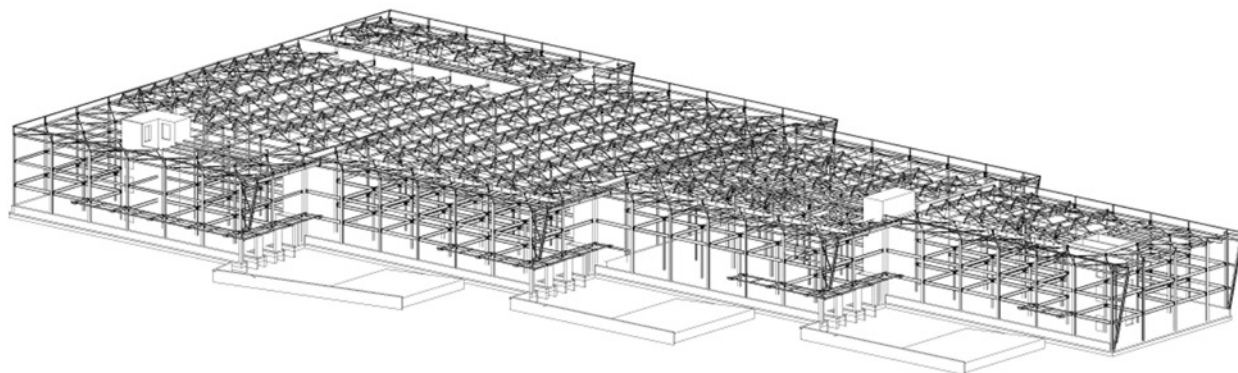




Würth Italia

Sede principale
Pichler Architects

-  Egna (Italia)
-  2002
-  Strutture in acciaio: 1200 t
-  Facciate: 19000 m²





Melinda Coba Denno

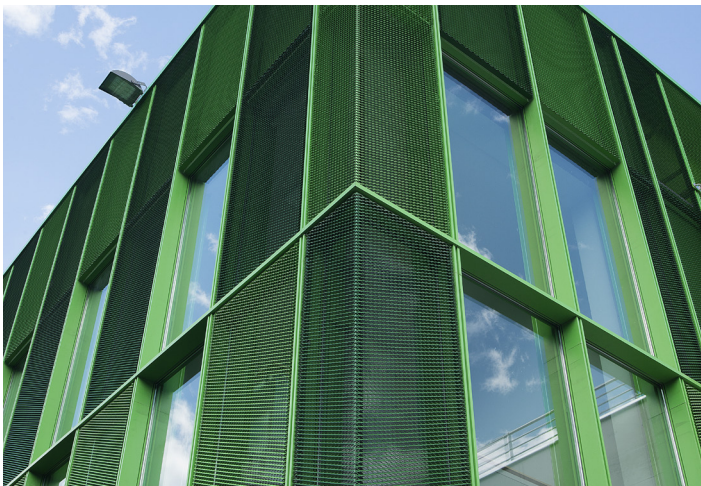
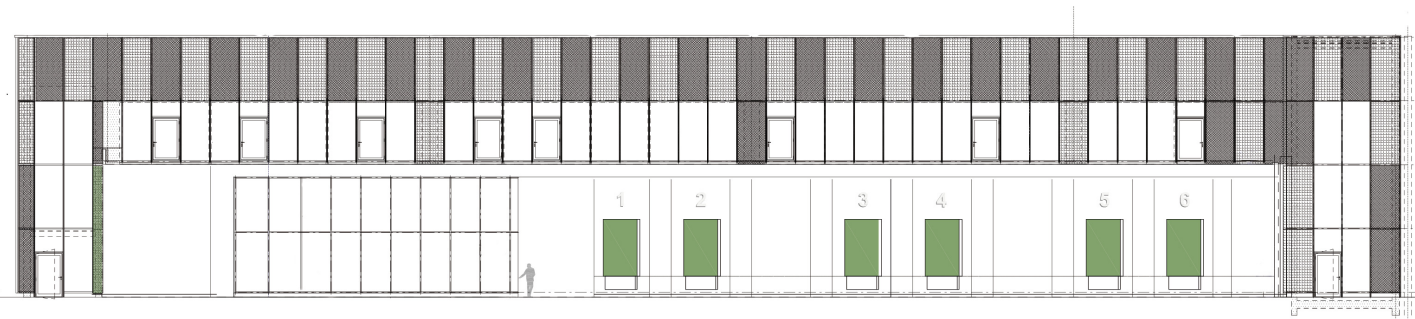
Magazzino ortofrutticolo

Studio Azzali

 Denno (Italia)





 2015

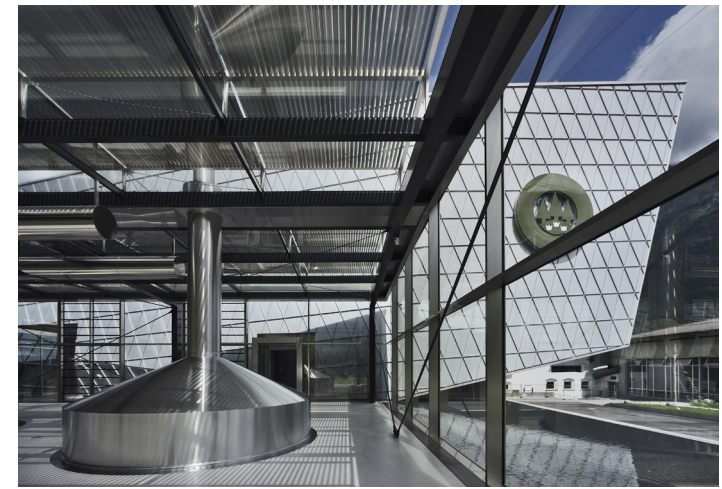
 Facciate: 2850 m²

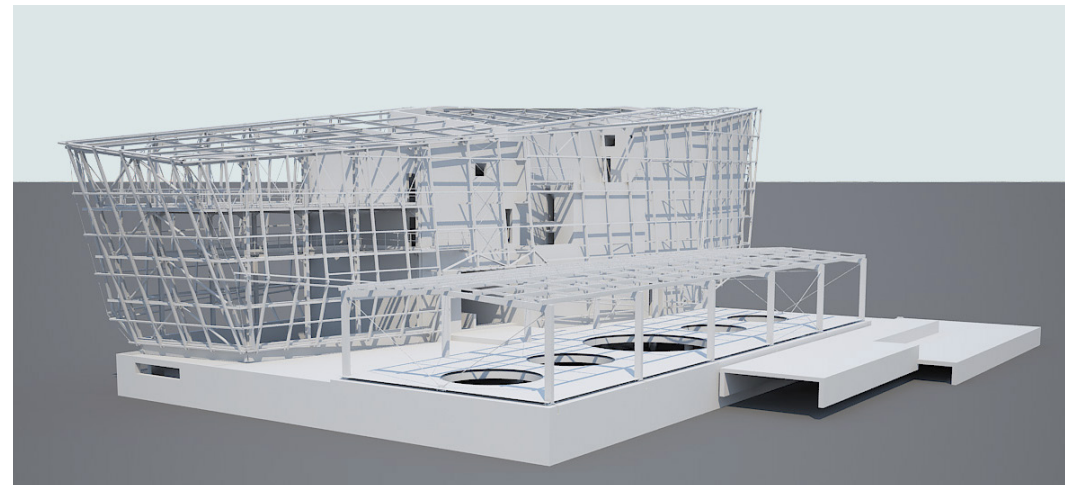
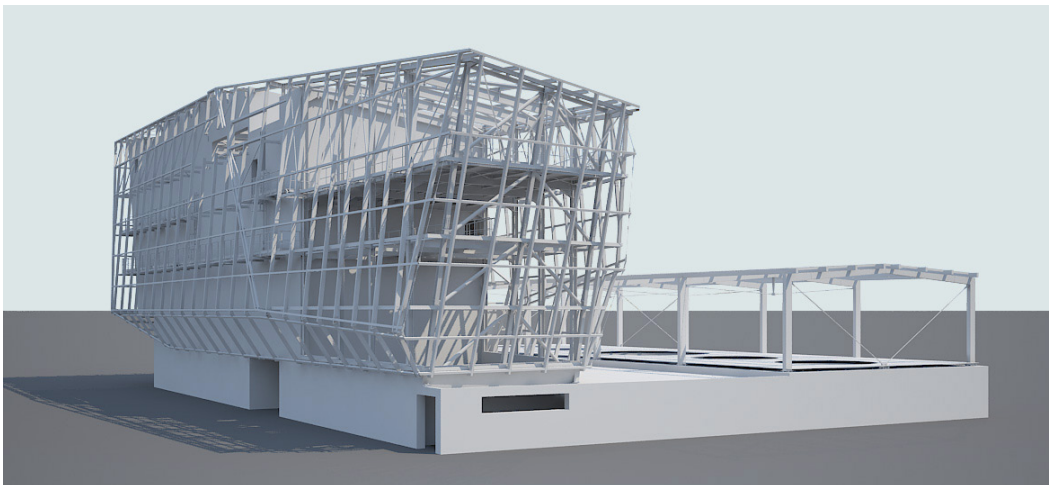
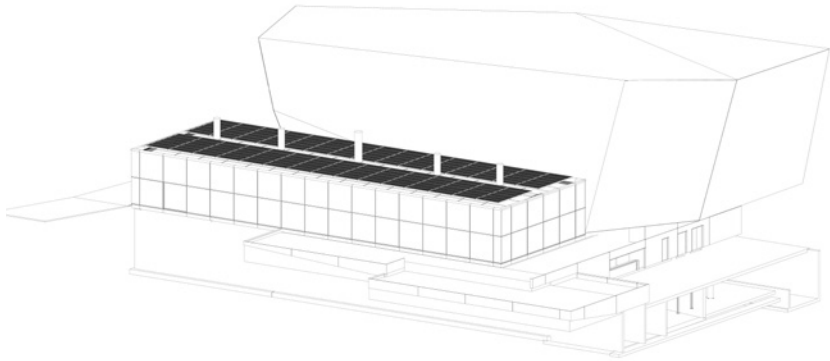
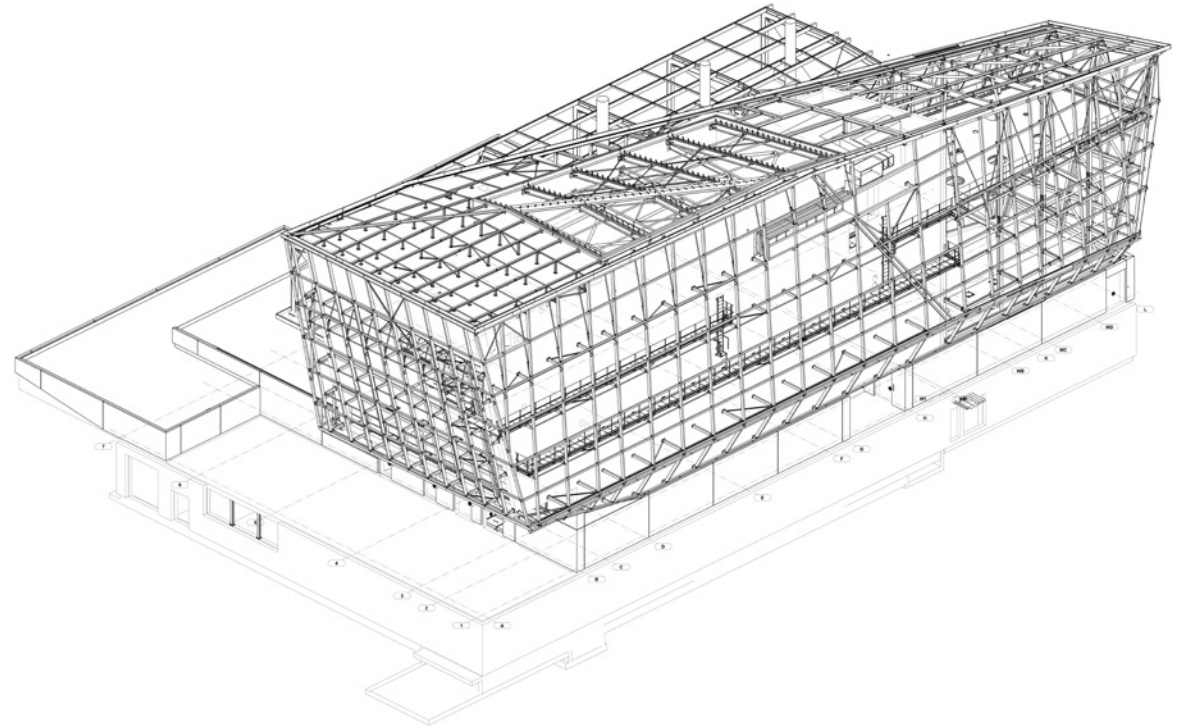
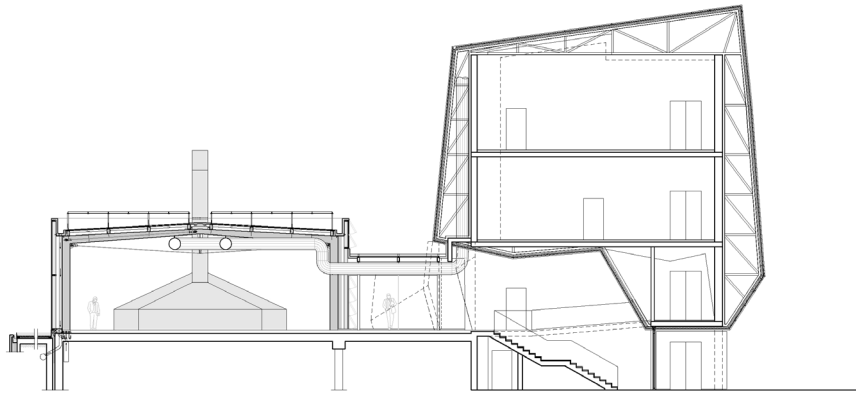


Forst

Birrificio
Pichler Architects

-  Lagundo (Italia)
-  2011
-  Strutture in acciaio: 300 t
-  Facciate: 1400 m²





Rauch

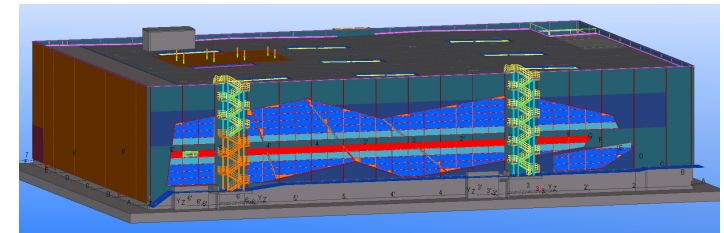
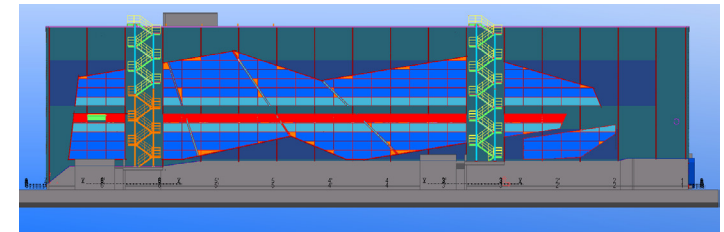
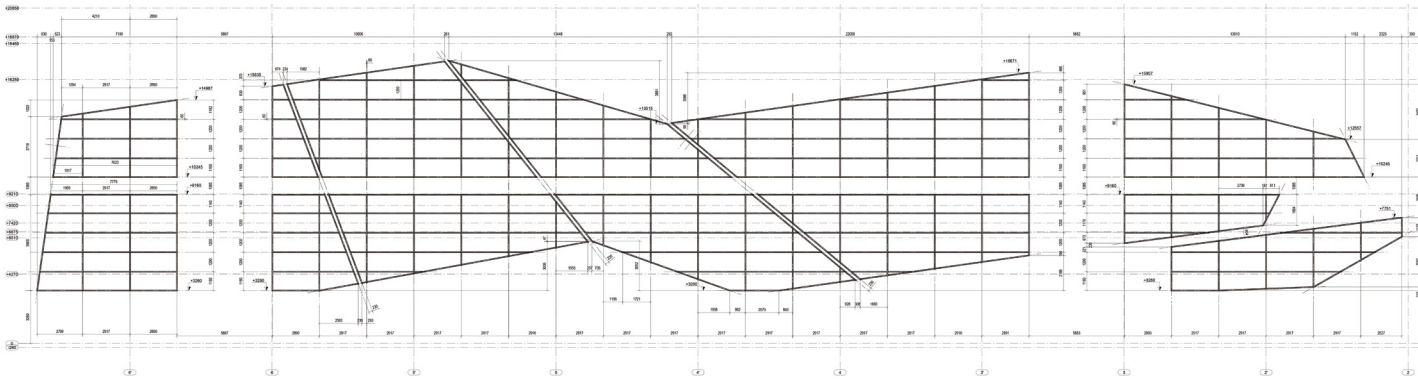
Impianto di imbottigliamento

ATP architekten ingenieure

-  Nüziders (Austria)
-  2014
-  Strutture in acciaio: 1300 t
-  Facciate: 21200 m²



© Thomas Jantscher






Mila

Ristrutturazione edificio industriale

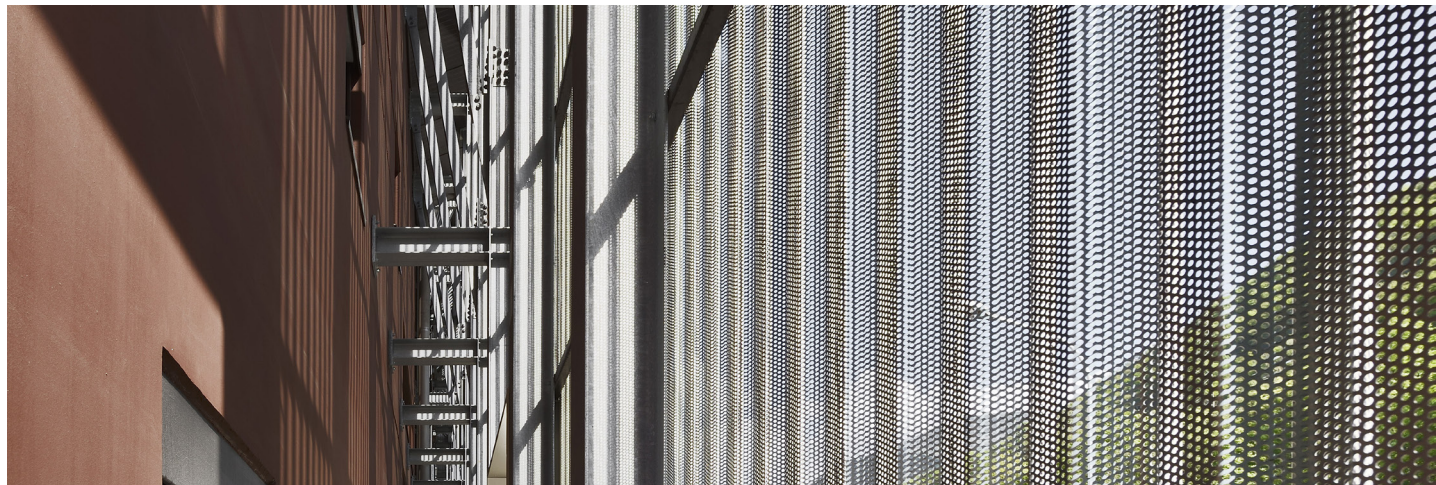
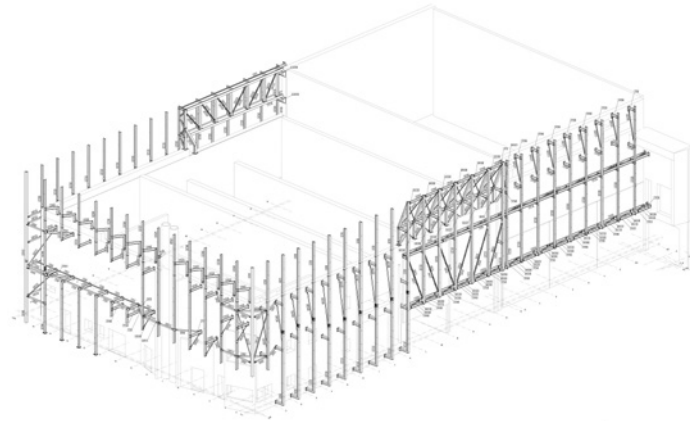
Pichler Architects

 Bolzano (Italia)

 2014





 Strutture in acciaio: 46 t

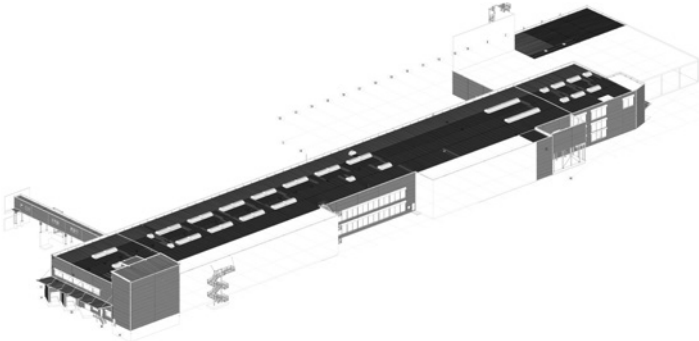
 Facciate: 1520 m²



Panificio industriale

Weber & Partner





-  Gränichen (Svizzera)
-  2016
-  Strutture in acciaio: 455 t
-  Facciate: 6000 m²

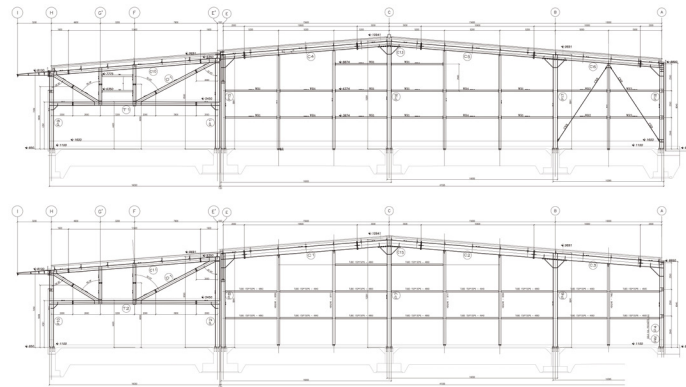




Gastrofresh

Centro logistico

-  Blumau (Italia)
-  2000
-  Strutture in acciaio: 500 t
-  Facciate: 3000 m²

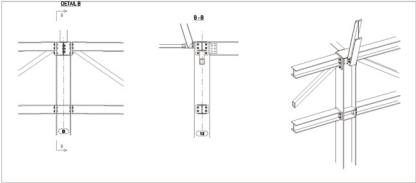
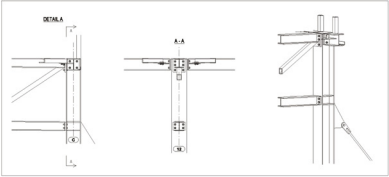
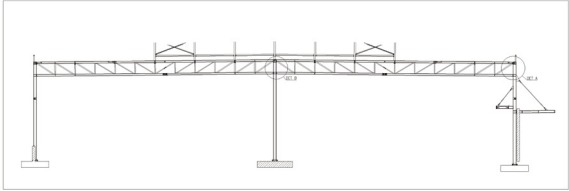
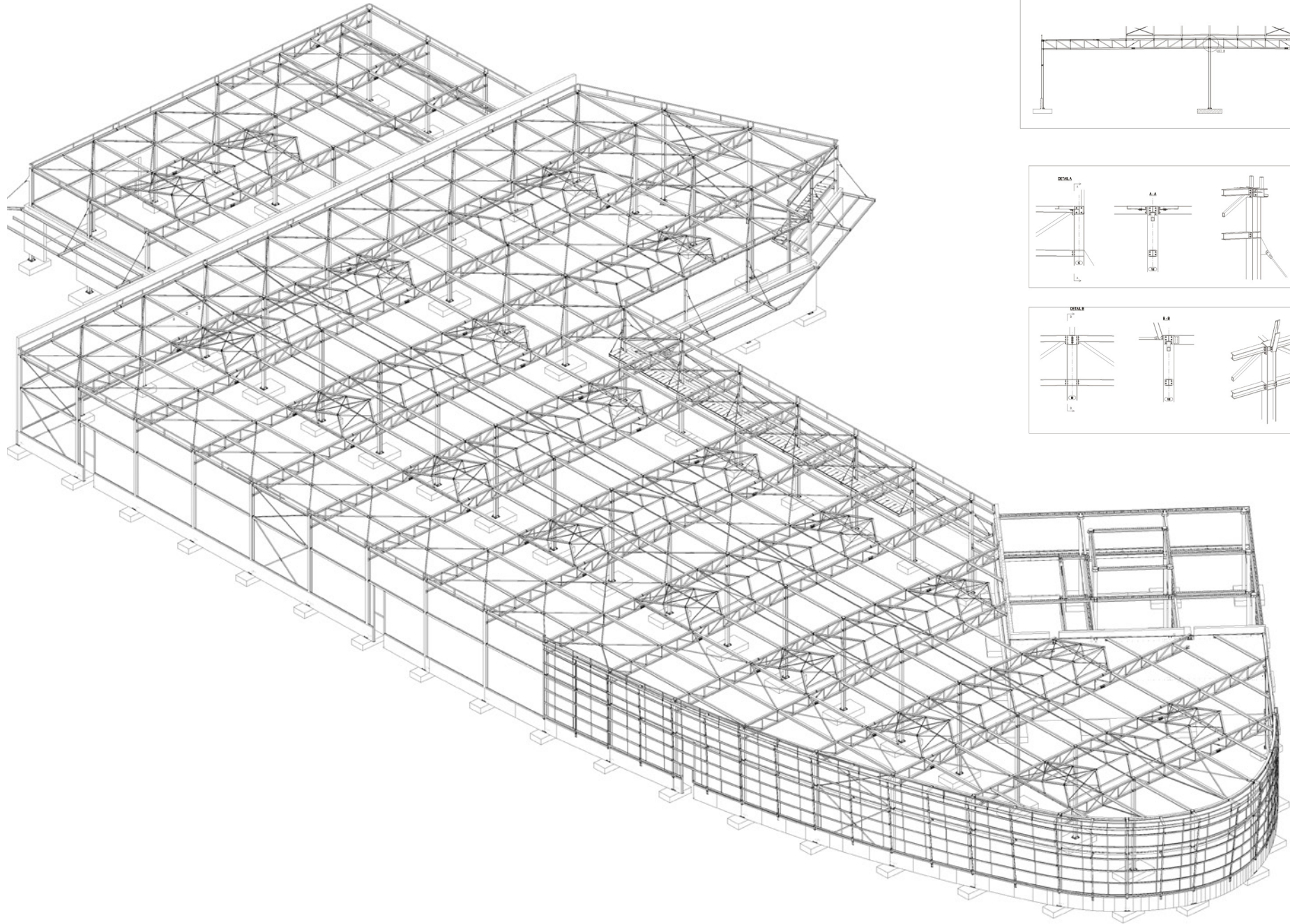


Alpentrans

Sede principale e centro logistico
Pichler Architects

-  Salorno (Italia)
-  2008
-  Strutture in acciaio: 350 t
-  Facciate: 2500 m²






Strassenstützpunkte

Centri logistici di manutenzione stradale della Provincia autonoma di Bolzano

Roland Baldi & Thomas Simma

 Bolzano, San Pancrazio, Curon Venosta (Italia)

 2006

 Strutture in acciaio: 233 t






GES Ferrari Logistic building

Centro logistico per F1

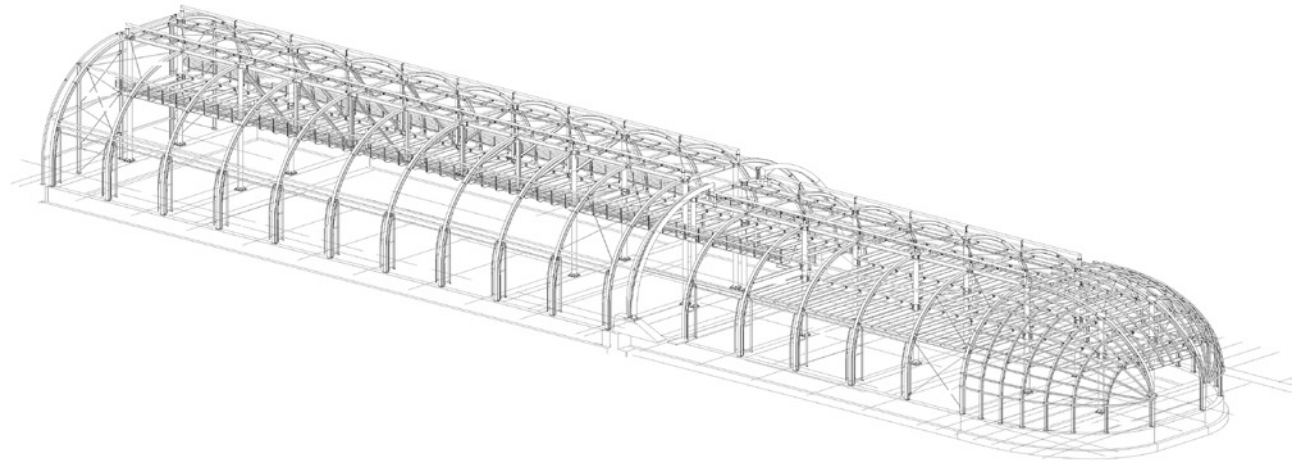
Studio Sturchio Architects & Designers

 Fiorano (Italia)

 2002

 Strutture in acciaio: 250 t





 Facciate: 3600 m²

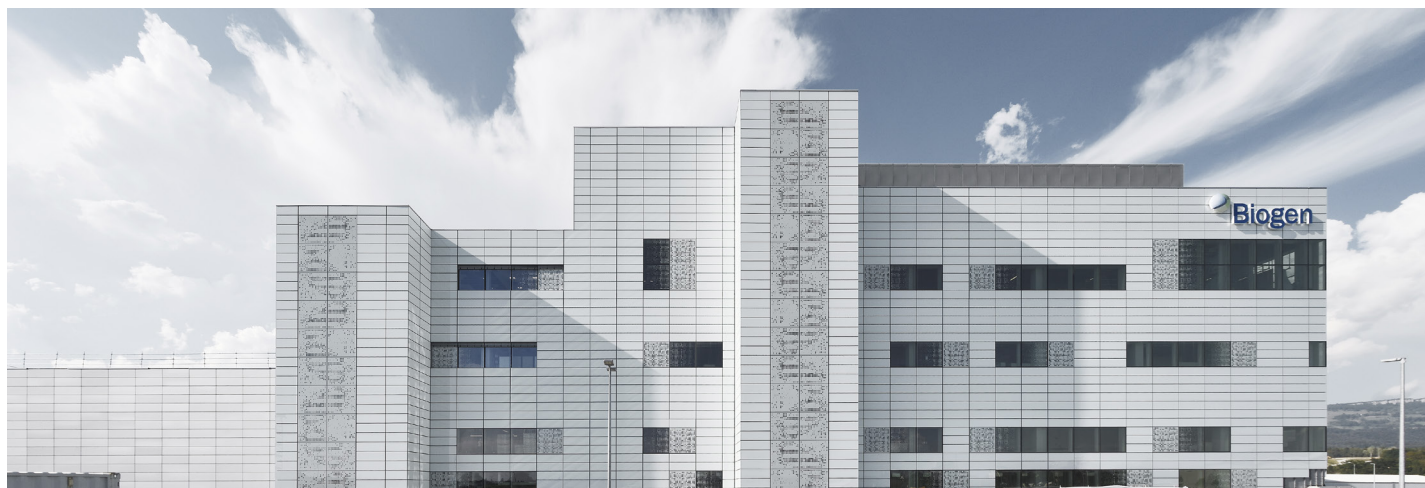


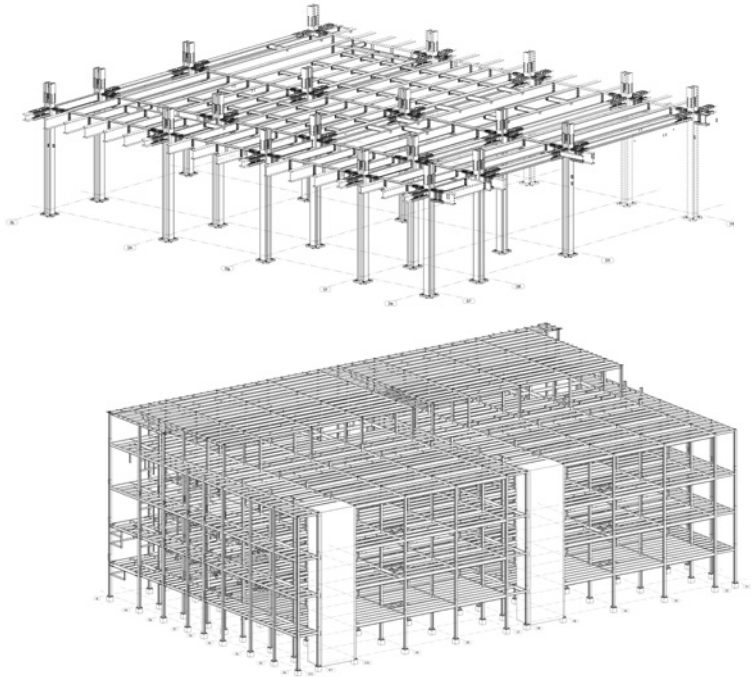
Biogen BMC

Impianto di produzione di biologia di nuova generazione

Burckhardt + Partner





-  Solothurn (Svizzera)
-  2018
-  Strutture in acciaio: 13000 t
-  Facciate: 23000 m²

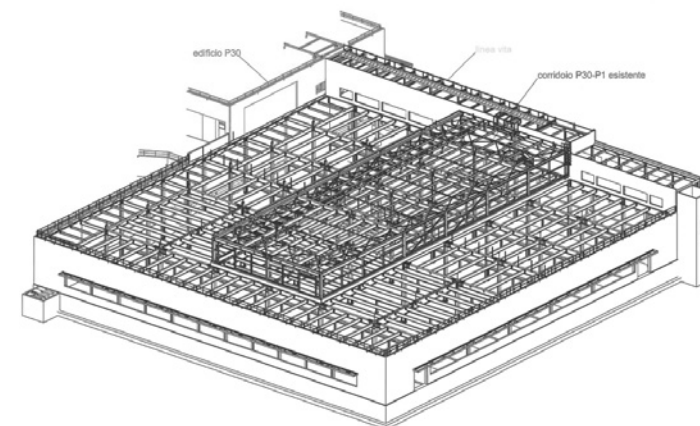




Eli Lilly

Sede e centro di produzione di prodotti biofarmaceutici
Jacobs Italia

-  Sesto Fiorentino (Italia)
-  2008
-  Strutture in acciaio: 900 t
-  Facciate: 1700 m²






Sandoz

Ponte di collegamento

HWW Architekten

 Kundl (Austria)

 2012

 Strutture in acciaio: 10 t




 Facciate: 193 m²



ZAV Recycling

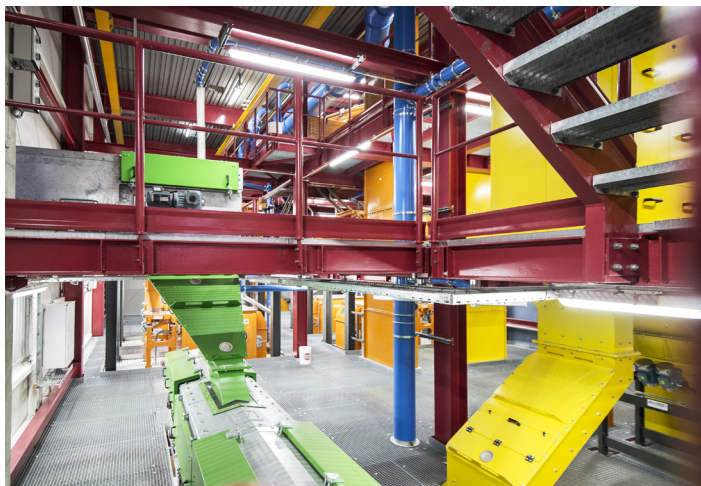
Impianto di riciclaggio

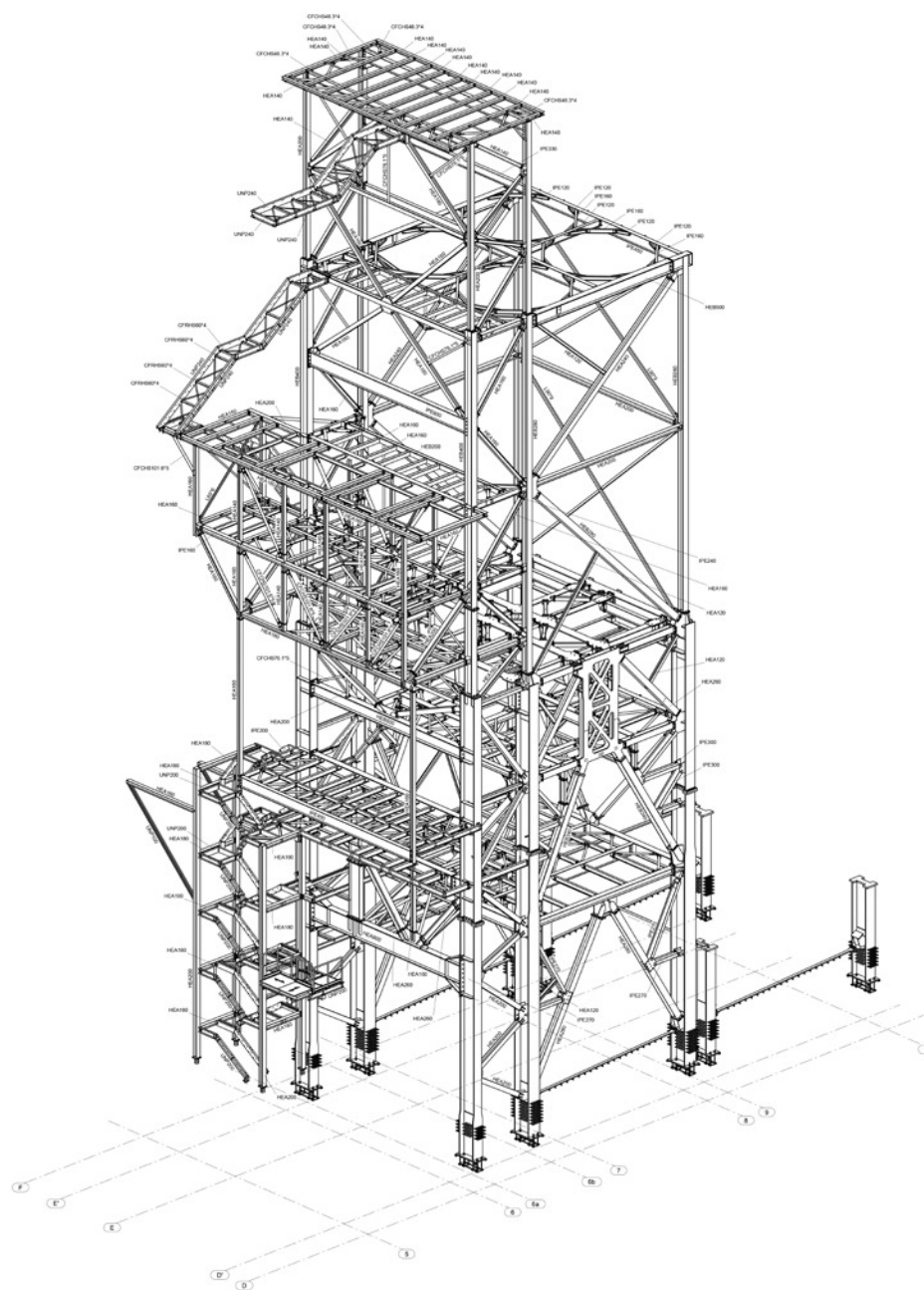
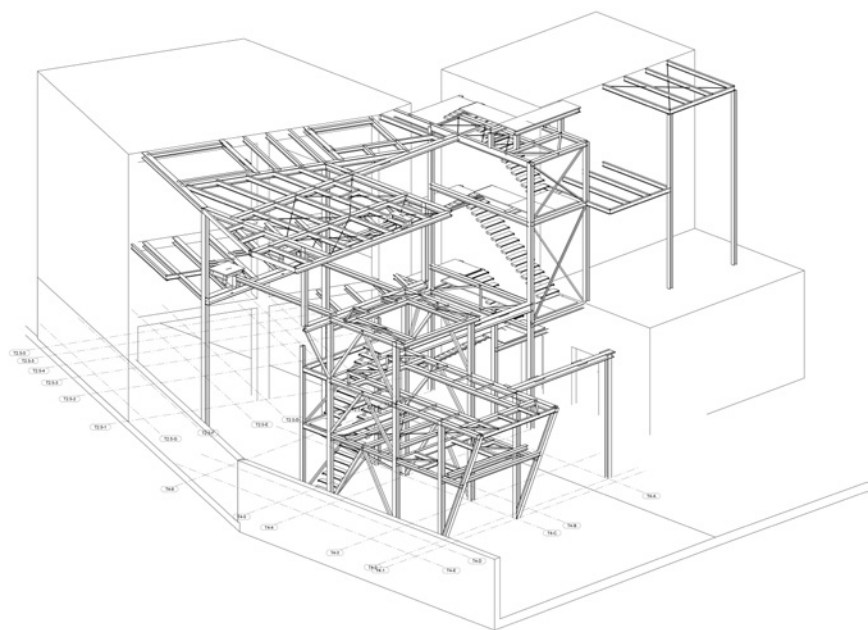
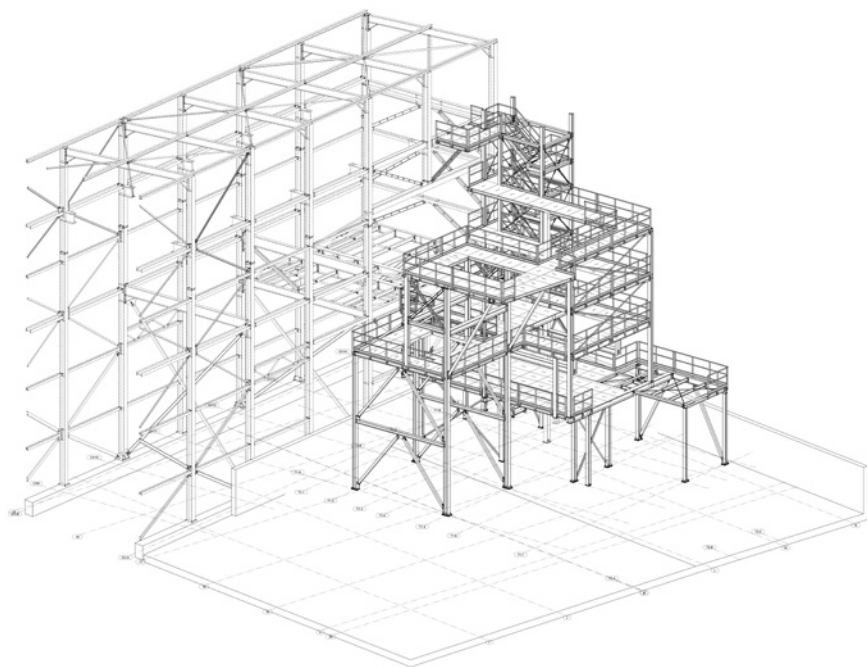
Reichel Architekten

-  Hinwil (Svizzera)
-  2015
-  Strutture in acciaio: 400 t



© Alex Filz







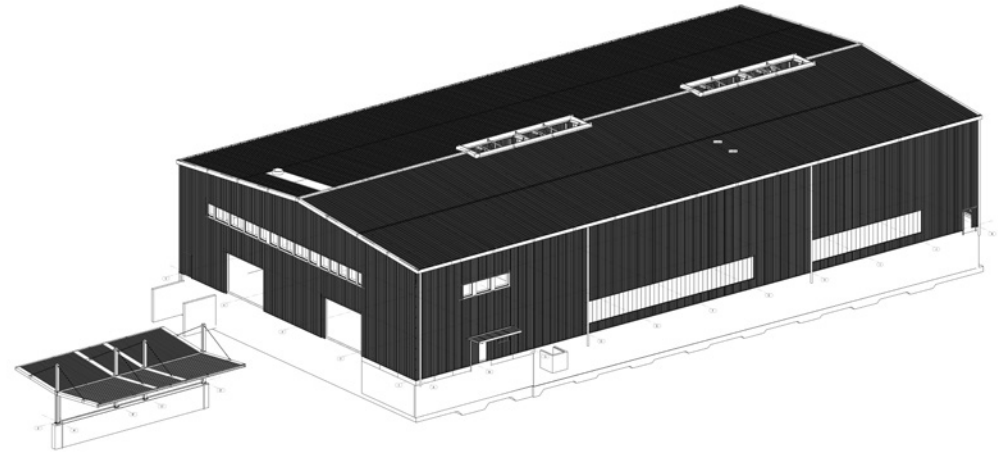
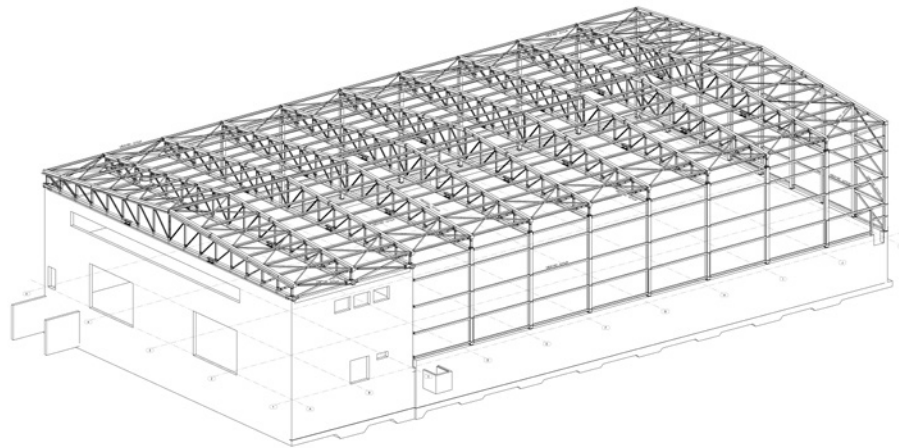


Kezo

Area produttiva

Reichel Architekten

-  Hinwil (Svizzera)
-  2016
-  Strutture in acciaio: 186 t
-  Facciate: 2100 m²






Eco-Center

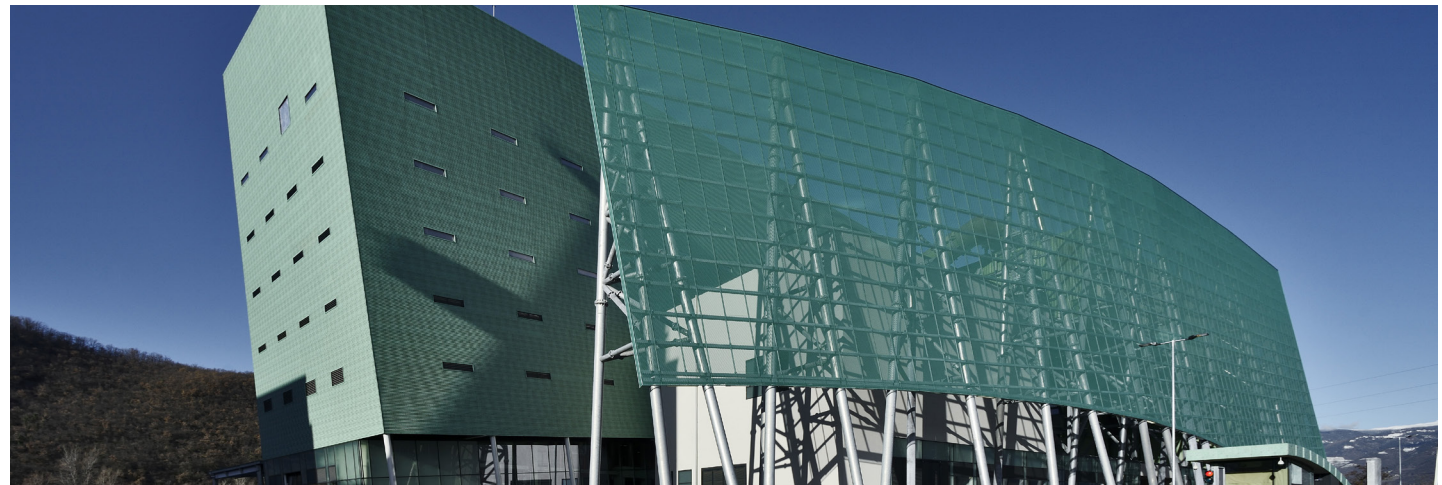
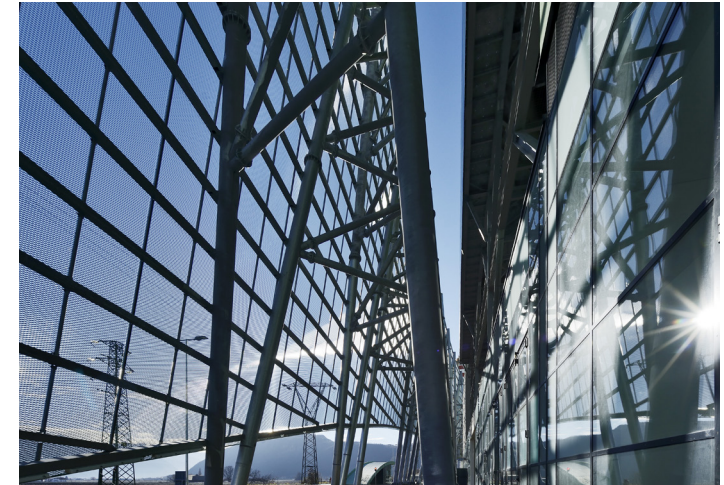
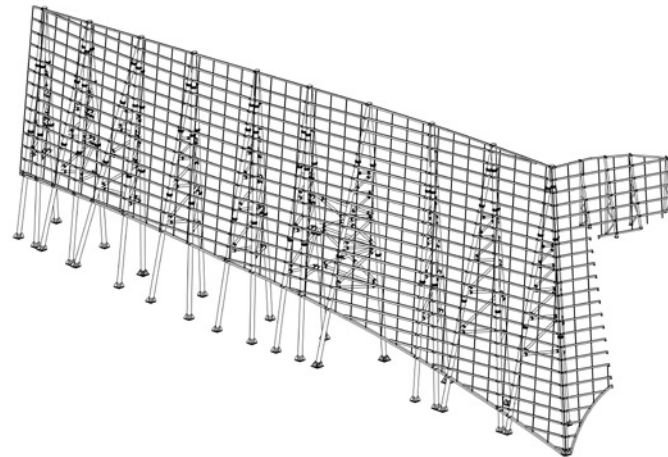
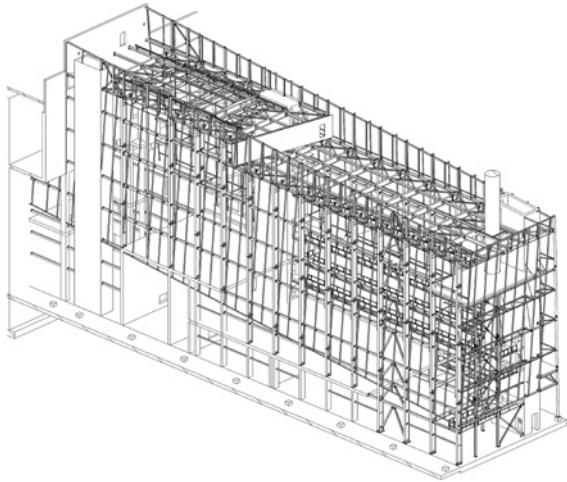
Termovalorizzatore

Claudio Lucchin & architetti associati Angelo Rinaldo
Daniela Varnier

 Bolzano (Italia)

 2013





 Strutture in acciaio: 2100 t



Alperia Tower

Arte e architettura per il nuovo serbatoio di accumulo del calore

Valentina Bonato, Cagol, Niedermayr & Artist Julia Bornefeld


-  Bolzano (Italia)
-  2017
-  Strutture in acciaio: 448 t
-  Facciate: 3700 m²



Showpalast München

Il primo parco avventura al mondo per cavalli

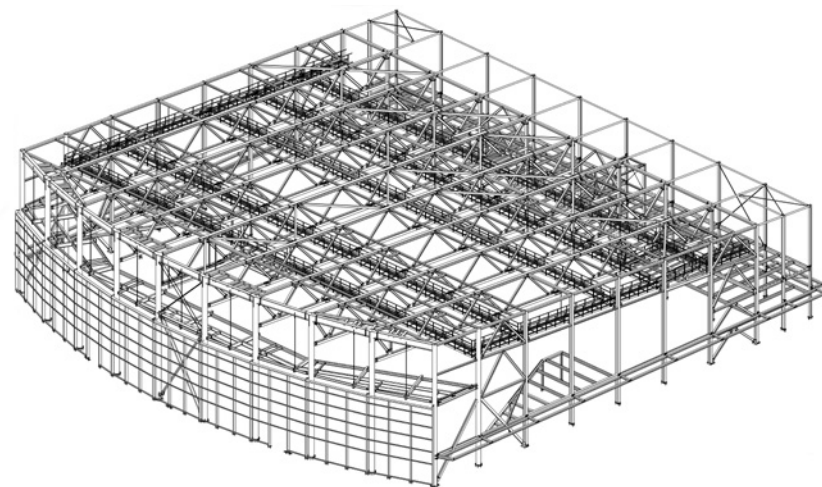
GRAFT

 Monaco (Germania)

 2017

 Strutture in acciaio: 704 t

 Facciate: 645 m²






Expo 2015

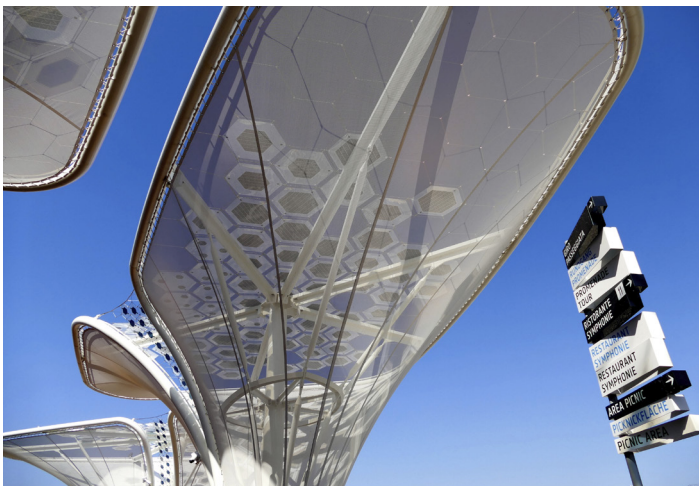
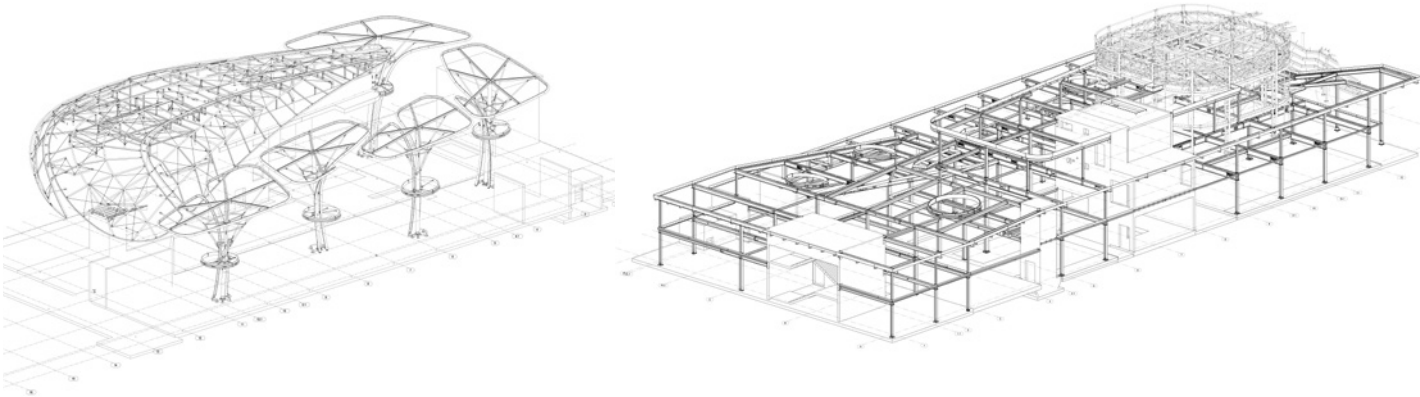
Padiglione Germania

Schmidhuber & Partners

 Milano (Italia)

 2015

 Strutture in acciaio: 350 t



Flagshipstore H&M - La Lanterna

Negoziò e "La Lanterna"

Studio Fuksas

-  Roma (Italia)
-  2013
-  Strutture in acciaio: 240 t
-  Facciate: 2000 m²






SPG

Sede principale

Giovanni Vaccarini Architetti

 Ginevra (Svizzera)

 2016

 Strutture in acciaio: 50 t


 Facciate: 1800 m²



Brainlab

Sede principale in zona "Messe München"

kadawittfeldarchitektur

 Monaco (Germania)

 2017

 Facciate: 12000 m²






Salewa


Sede principale

Cino Zucchi & Park Associati

 Bolzano (Italia)

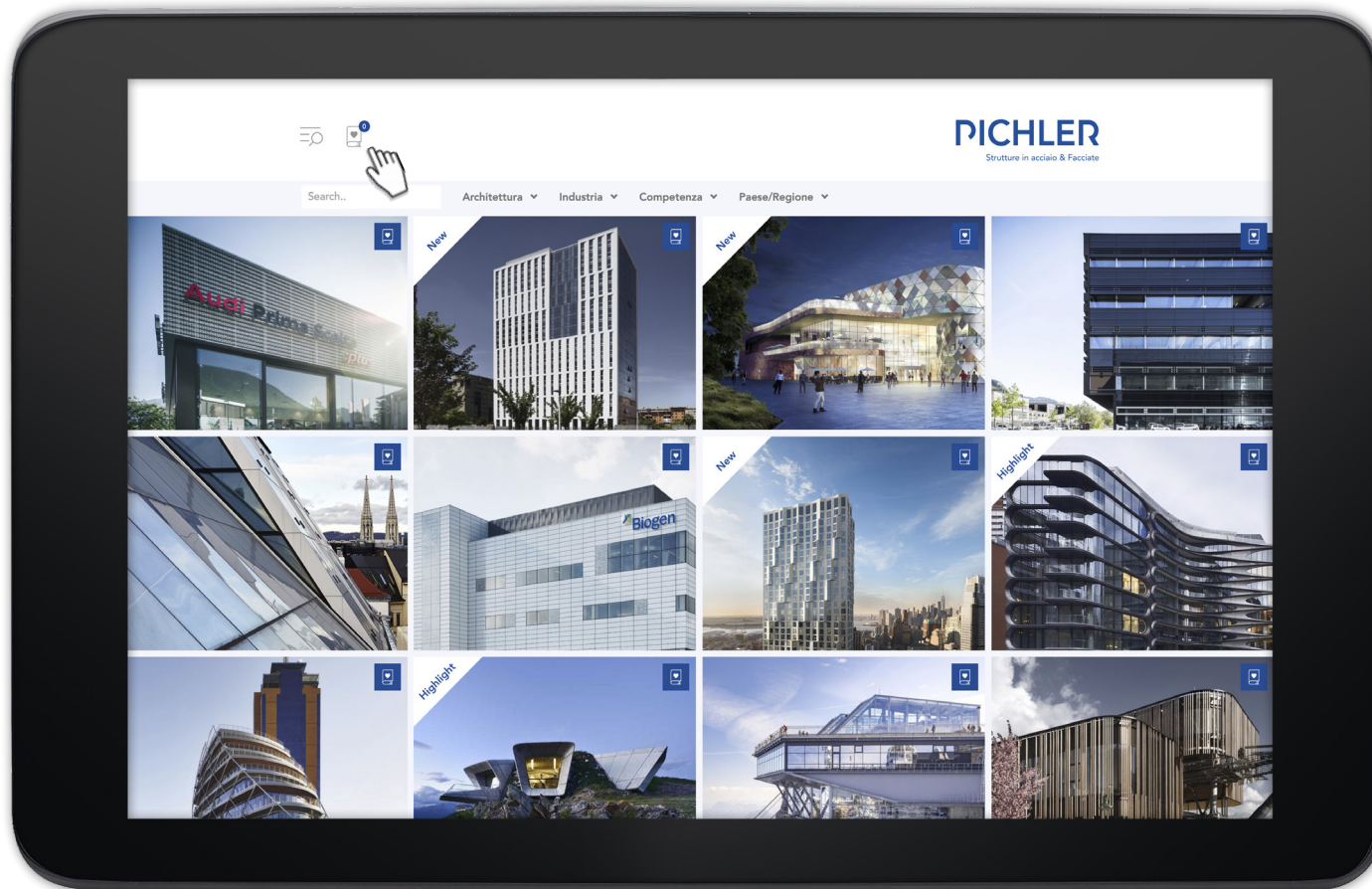
 2012

 Strutture in acciaio: 300 t

 Facciate: 11300 m²



www.pichler.pro



Crea „My Reference Book“ in tre semplici passaggi:

1. Visita il nostro sito: www.pichler.pro e trova oltre 190 referenze
2. Segna i progetti che ti interessano
3. Crea „My Reference Book“ e fai clic su scarica PDF



Seguici su:



PICHLER

ITALIA
PICHLER Projects Srl
Sede centrale Bolzano
Via T. A. Edison 15
I-39100 Bolzano
T +39 0471 065 000
info@pichler.pro
www.pichler.pro

Ufficio Milano
Via Buzzi 4
I-20017 Rho-MI
T +39 02 939 060 94
info@pichler.pro
www.pichler.pro

Interni

PICHLER Projects Srl
Catalogo .it
Copyright

Concept and Design
Photos

Edition - June 2019 -
© 2019 Copyright PICHLER Projects Srl
All rights reserved. www.pichler.pro

PICHLER Projects Srl
© OskarDaRiz, Alex Filz

